

**LEKOLED**

**Multifunction Remote  
Controller  
User Manual**

**V:1.0**

**LEKOLED Technology Corporation**

# Multifunction Remote Controller



**Model:** TGCC-HR-B1

**Power:** AAA battery \*2 3VDC

**Protocol:** RF-2.4G

**Controllable Distance:** 30 Meters without Obstacle

**Functions:** Dimming and CCT adjusting, group control, all control, timing ON/OFF, remote controller copy, scene mode, night light mode

**Certification:** CE, FCC

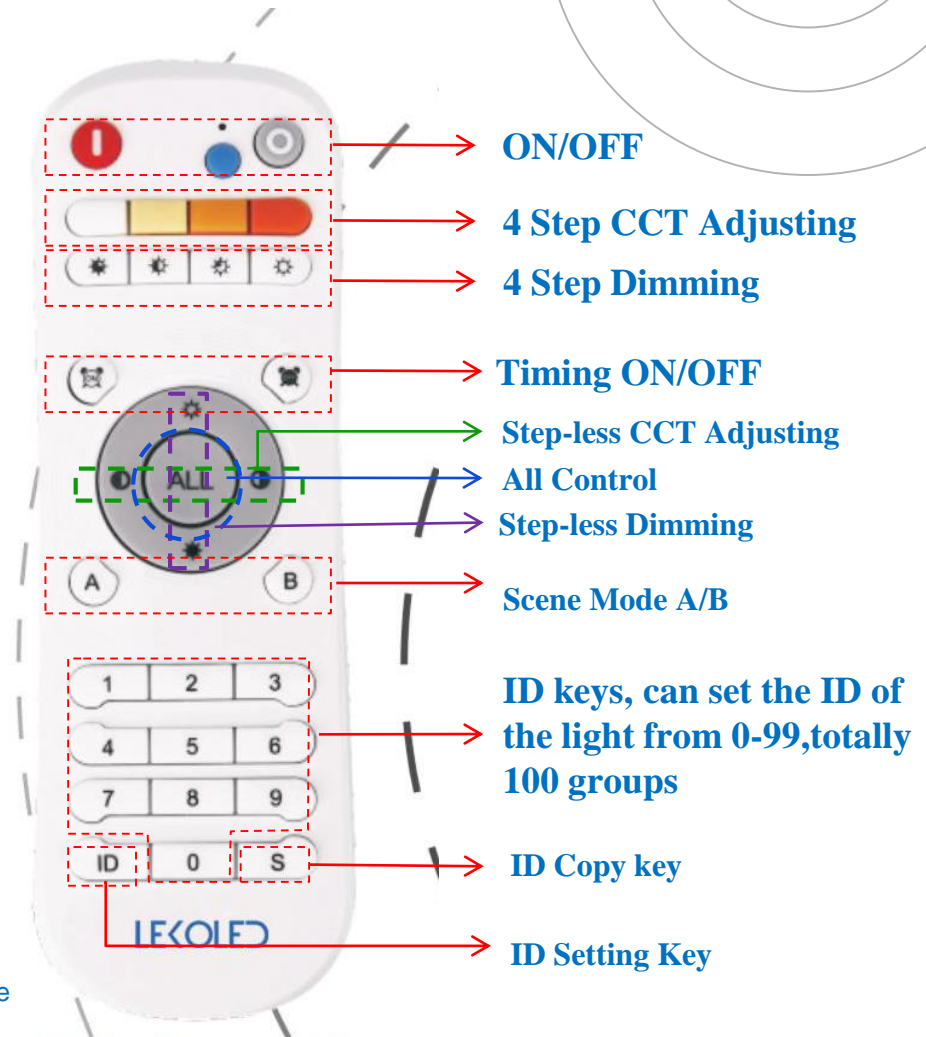
**FCC ID:** 2ANG3TGCC-HR-B1

This device complies with Part 15 of the FCC Rules. Operation is subject to the following two conditions:

- (1) This device may not cause harmful interference, and
- (2) This device must accept any interference received, including interference that may cause undesired operation.

**Notes:**

- (1) Metal shielding is not allowed.
- (2) Please remove the battery if the remote control is not used for a long time.
- (3) Keep this device as far as possible away from electromagnetic interference in the surrounding environment to ensure RF controlling behavior.



# Set ID Number of The Lights



Step1: Turn ON the light by switch

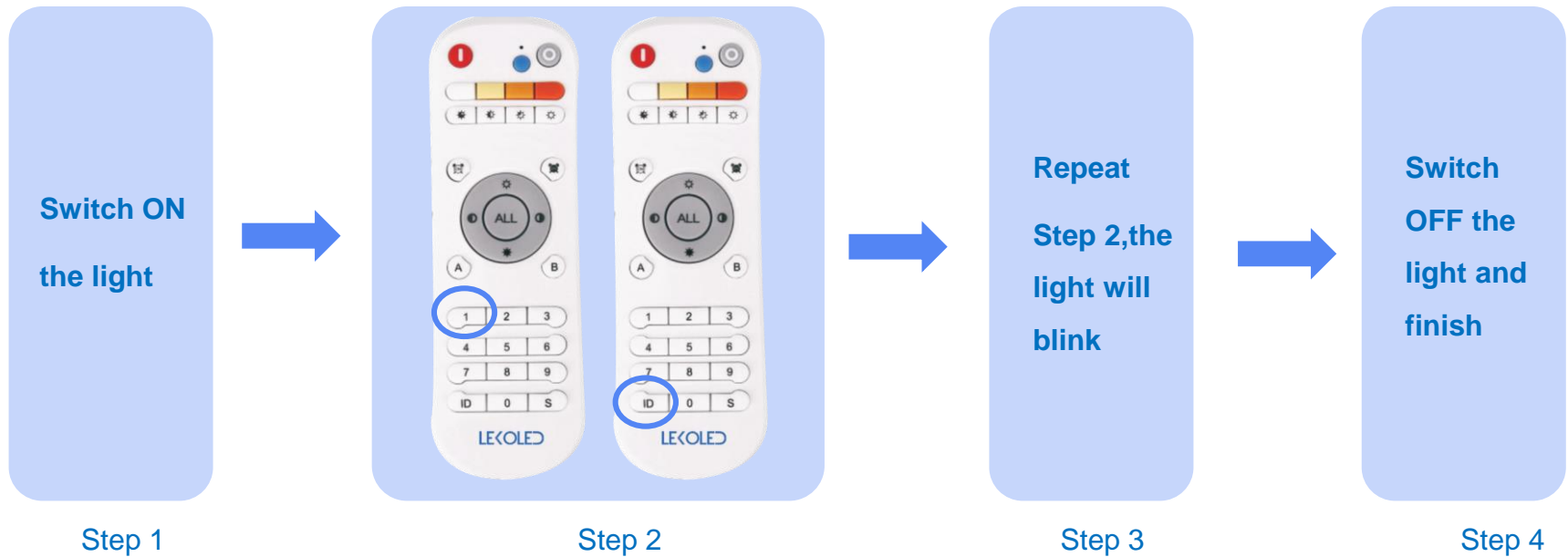
Step2: Press any number from 0 to 99,and then press “ ID ”key

Step3: Repeat Step2,the light will blink one time

Step4: Switch off the light within 10 seconds and then finish setting

Note: In one ID number, the number of the lights can be no limited within controllable distance.

Example: Set the light as No.1



# Group Control and All Control



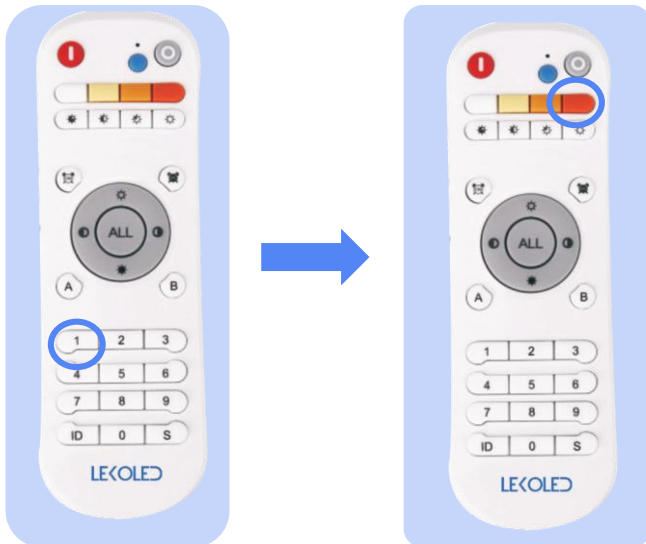
**Function :** As the introduction on page 2

**Control the single group:** Press the ID number of the group, and then press the function key (ON/OFF,4 step dimming,4 step CCT tuning, step-less dimming, step-less CCT tuning)

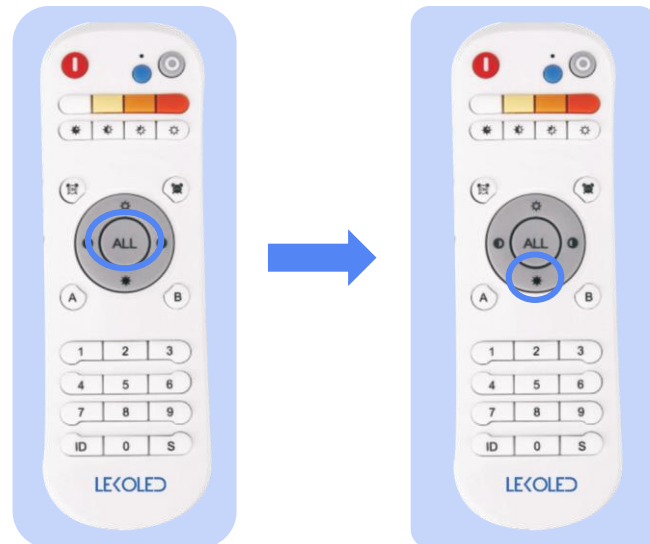
Note: The remote will remember the last ID number, if you want to control the same group, you don't need to press the ID number every time before you press the function keys.

**All-Groups Control:** Press “  ” key to control all groups that have paired with the remote.

**Example 1: Turn the No.1 light to warm white**

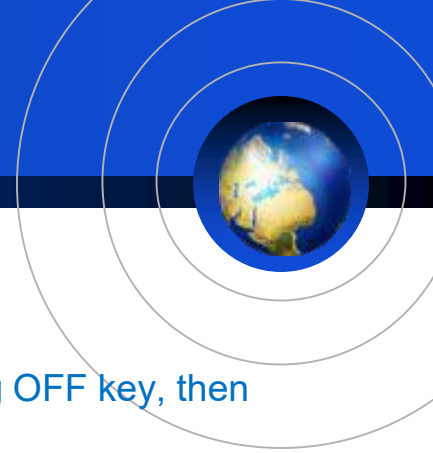


**Example 2: Dim down all lights**



Note: Just keep pressing the key for step-less dimming or step-less CCT tuning.

# Timing ON/OFF



## Setup:

Step1: Press the ID number of the light to be set, and then press “ ID ”key

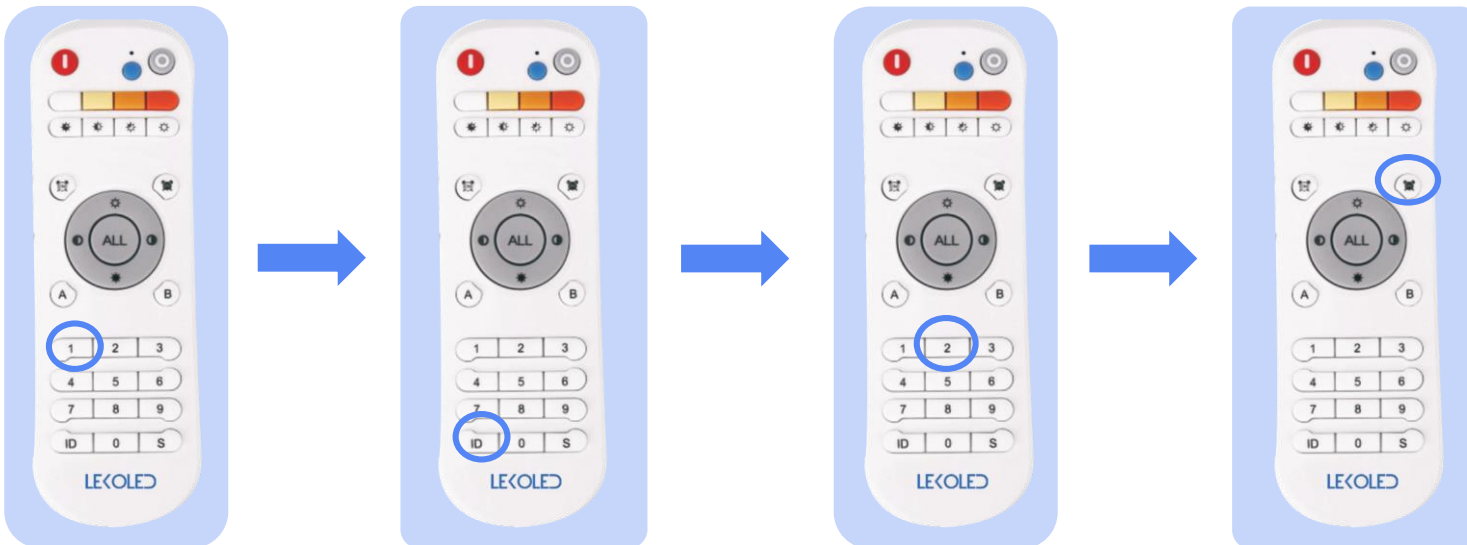
Step 2: Press number key from 1 to 99, then press “  ”timing ON key or “  ” timing OFF key, then finish setting. “1” represents 10 minutes.

## Cancel:

Step1: Press the ID number of the light to be set, and then press “ ID ”key

Step2: Press number key 0, then press “  ”timing ON key or “  ” timing OFF key to cancel

### Example 1: Set No.1 light turn OFF 20 minutes later



Note: Due to the accuracy of MCU timer, the time of above setting may be different for different drivers.

# Copy ID of Remote Controller



## Setup:

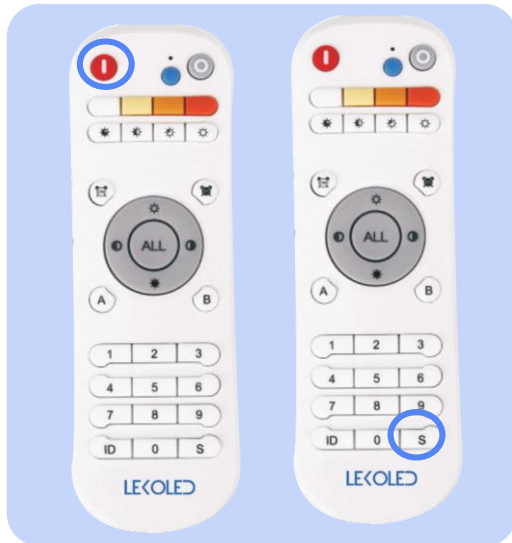
Press “ S ” key of the new remote controller and “ I ” key of original remote controller at the same time and keep 10 seconds, till the indicator blinks 3 times, finish setting.

Note: After copy ID of the controllers, all the controllers can control the same lights and have the same functions.

## Recovery:

Press “ S ” key and “ ALL ” key of the remote controller which had copied ID from the original remote controller, keep 10 seconds till the indicator blink, then the controller recover it's ID.

### Example 1: Copy ID of the remote controller



Original Controller    New Controller


### Example 2: Recovery ID of the remote controller



# Night Light Mode



## Setup:

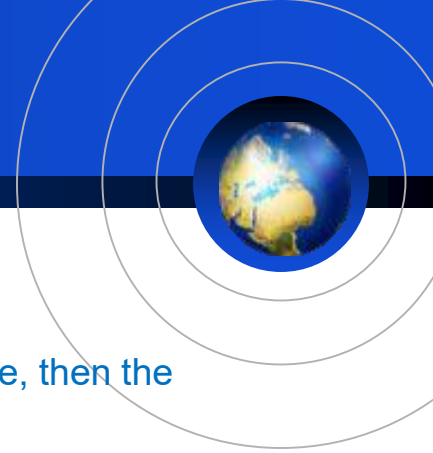
Press the “” key when the light is turned OFF by remote controller to enter night light mode.

Note: At night light mode, the light will be at lowest brightness.

## Example 1: Set No.1 light as night light mode



# Scene Mode



## Setup:

Step 1: Adjust the light as your preference.

Step 2: Press the ID number of the light

Step 3: Press “ ID ” key and then press “ A ” or “ B ”, the light will flash 1 time, then the scene will be saved as A scene or B scene.

Note: This remote can save “A” and “B” scenes.

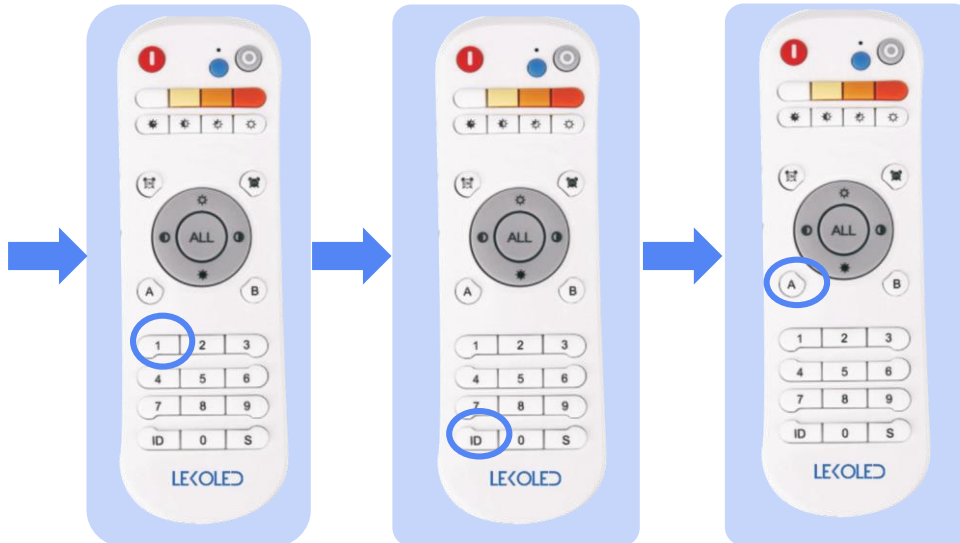
## Recall:

Step1: Press the ID number of the light

Step2: Press “ A ” or “ B ”, the light will enter the scene mode you had preset.

### Example 1: Set No.1 light as scene A

Adjust the light as you prefer



### Example 2: Recall No.1 light as scene A

