

LEKOLED

点亮世界 引领未来
Innovative LED Solutions for a Brighter World

LEKOLED TECHNOLOGY CORPORATION

Office Add: 3rd Floor First Building WeiQun Industrial BaiHua Road, Guangming
District, ShenZhen City, Guangdong Province, China

Email: info@lekoled.com

Web: www.lekoled.com

LEKOLED TECHNOLOGY CORPORATION

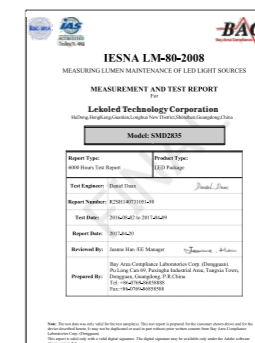
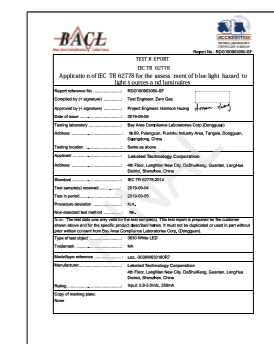
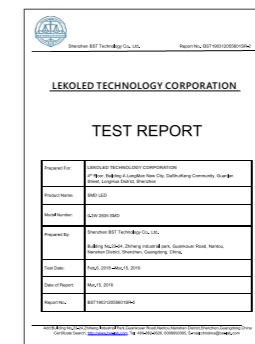
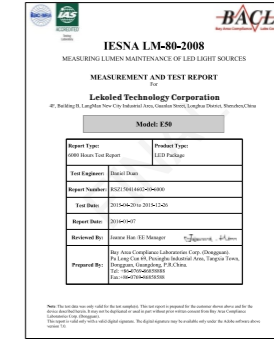
ABOUT LEKOLED

LEKOLED TECHNOLOGY CORPORATION has delivered the best quality LED components to different lighting application for clients under our strong technological support, professional management system and perfect&stable supply chain system. 'Doing business with utmost integrity that even makes the LKL-LED move' is our company's philosophy throughout daily operations. Our LEDs (IR LED, UV LED, GrowLightingLEDs, SMDLED,High Power LED, COB LED) apply to series Function Lighting, such as Infrared Sensor, Physical Therapy,Purification & Sterilization, UV Curing, Medical Beauty Equipment, Agriculture Lighting, Aquarium Lighting,Studio Lighting, Stage Lighting, Street Lamp, Landscape Lighting and other general lighting. PCBdesign and value-added SMT service is available. We got unparalleled customer trust level around the domestic and overseas marketing for over years. LKL-LED's 15 years, thank you very much for the attention and support. Our LEDs are approved with LM-80, RoHS, IEC62778, EN62471. Our product quality is very stable under our professional manufacturing process and strict production management process. Our staff iswell-experiencedinLEDs' industry and communicate well with our customers about product issues. LKL-LED shines all over the world, we offer our led components to lighting designers to brighten the future.



LEKOLED

WWW.LEKOLED.COM



Brief Development History



- 2012 LKL Established
- Focus on SMD LED packaging

2012

- Acquire LM80 report
- UV, IR LED lauched
- Obtain ISO9001:2008 approval

2014

- Ceramic 3535 LED Type development

2016

- Horticulture LED lauched
- High light efficacy LED available

2018

- UVC LED 260-280nm lauched
- Russian office established

2020

- We expect to work with you together to brighten the world in

2024

2022

01

General Lighting

- Wide Power Range 0.06W-18W available
- Various Packaging 3528, 3014, 2835, 5050, 3030, 3535 available
- High color uniformity, bi-color, 3 in 1, 4 in 1, 5 in 1 available
- Suitable for general lighting---indoor & outdoor lighting, industrial lighting...
- Customized CRI value available, CRI85, CRI90, CRI95, CRI98
- Most of LED LM-80, RoHS, IEC62778 approved

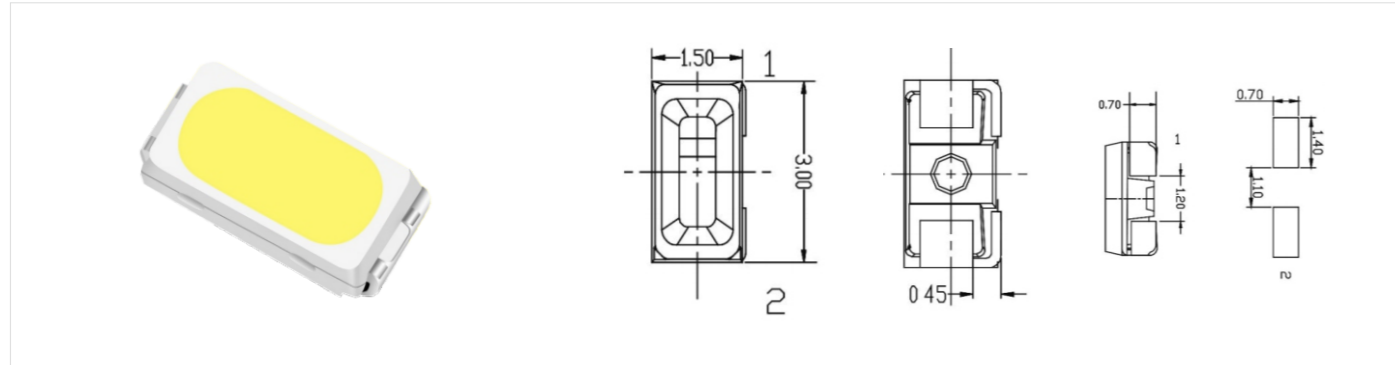


LEKOLED TECHNOLOGY CORPORATION

APPLICATION SCENARIOS

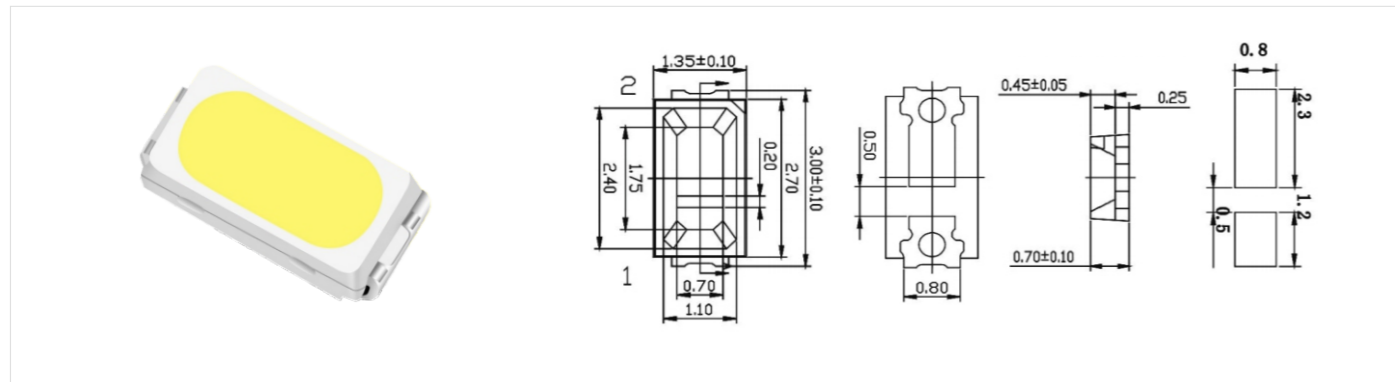


3014 SMD LED (side viewing)



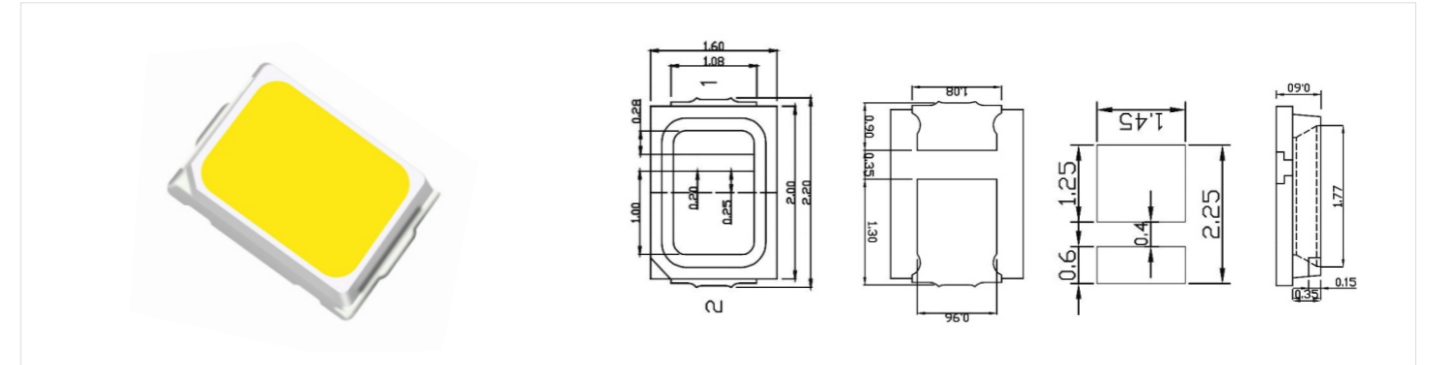
Package	Power (W)	Color	CCT (K)	CRI	Forward Voltage (V)	Forward Current (mA)	Luminous Flux (LM)	Viewing Angle (°)
LKL-3014S	0.1	White	3000-10000	80	2.8-3.2	30	10-14	120
LKL-3014S	0.2	White	3000-10000	80	2.8-3.4	60	22-30	120

3014 SMD LED



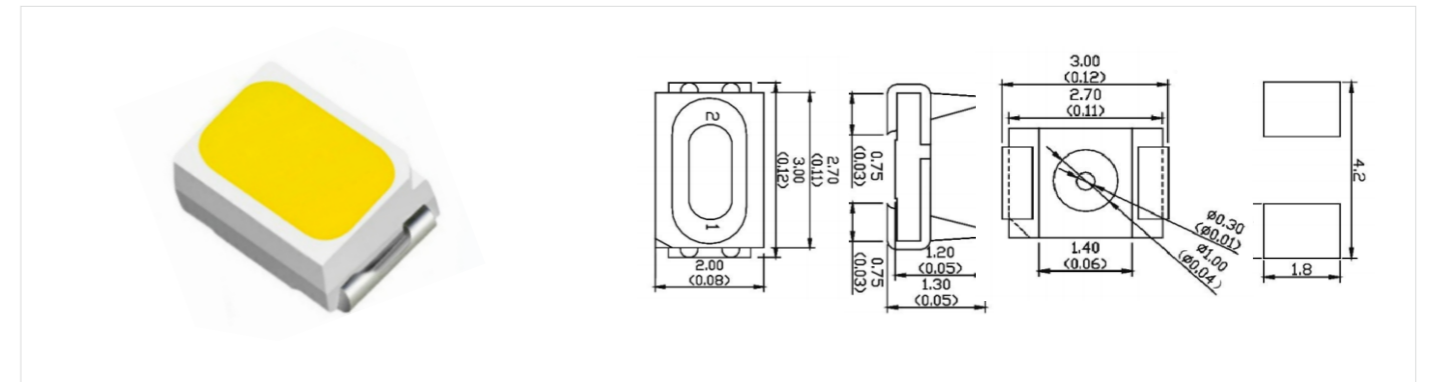
Package	Power (W)	Color	CCT (K)	CRI	Forward Voltage (V)	Forward Current (mA)	Luminous Flux (LM)	Viewing Angle (°)
LKL-3014	0.1	White	3000-10000	80	2.8-3.2	30	10-14	120
LKL-3014	0.2	White	3000-10000	80	2.8-3.4	60	22-30	120
LKL-3014	0.1	Phosphor Yellow	1200-2900	80	2.8-3.2	30	10-14	120
LKL-3014	0.2	Warm White	2900-4000	80	2.8-3.4	60	22-30	120

2016 SMD LED



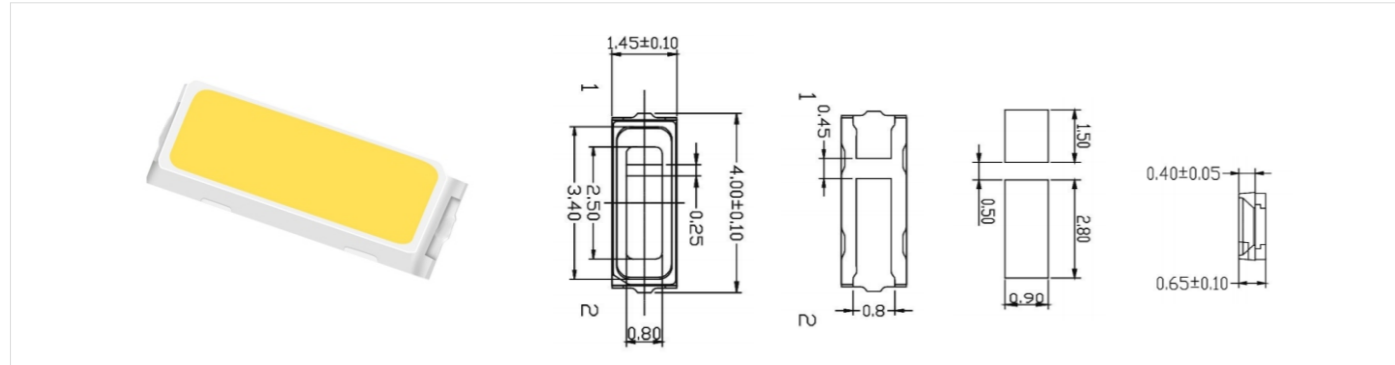
Package	Power (W)	Color	CCT (K)	CRI	Forward Voltage (V)	Forward Current (mA)	Luminous Flux (LM)	Viewing Angle (°)
LKL-2016	0.2	White	3000-6500	80/90	2.8-3.2	60	15-26	120
LKL-2016	0.5	White	3000-6500	80/90	3.0-3.6	150	40-70	120
LKL-2016	1	White	3000-6500	80/90	3.0-3.6	300	80-120	120

3020 SMD LED



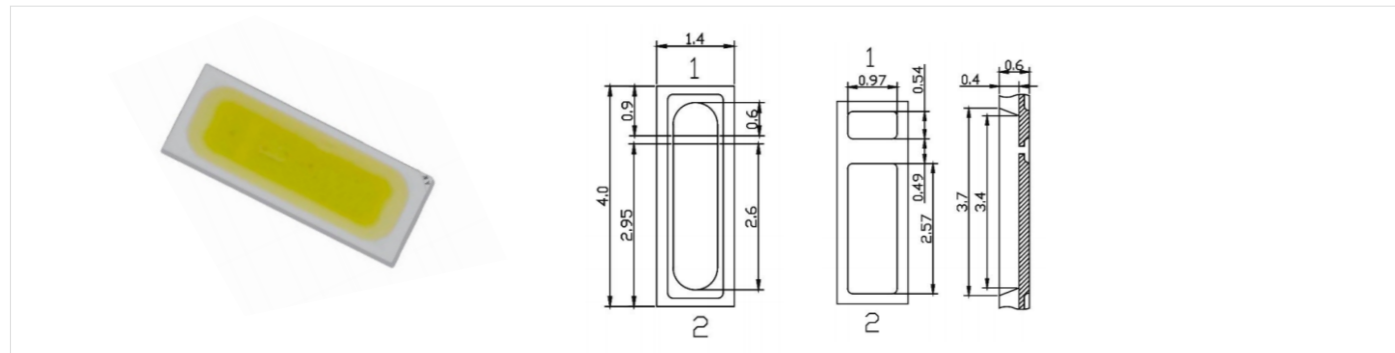
Package	Power (W)	Color	CCT (K)	CRI	Forward Voltage (V)	Forward Current (mA)	Luminous Flux (LM)	Viewing Angle (°)
LKL-3020	0.1	White	3000-10000	80	2.8-3.4	30	10-14	120
LKL-3020	0.1	Phosphor Yellow	1200-2900	80	2.8-3.4	30	7-12	120

4014 SMD LED



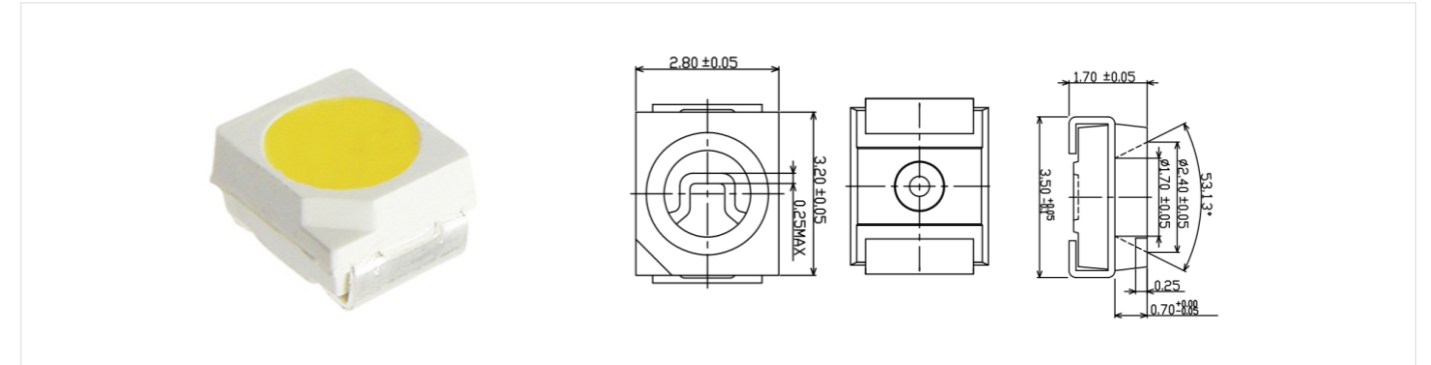
Package	Power (W)	Color	CCT (K)	CRI	Forward Voltage (V)	Forward Current (mA)	Luminous Flux (LM)	Viewing Angle (°)
LKL-4014	0.1	White	3000-10000	80	2.8-3.2	30	10-14	120
LKL-4014	0.2	White	3000-10000	80	3.0-3.6	60	20-28	120
LKL-4014	0.5	White	3000-10000	80	3.0-3.6	150	50-65	120
LKL-4014	0.8	White	3000-10000	80	5.8-6.2	120	70-90	120

4014 SMD LED EMC



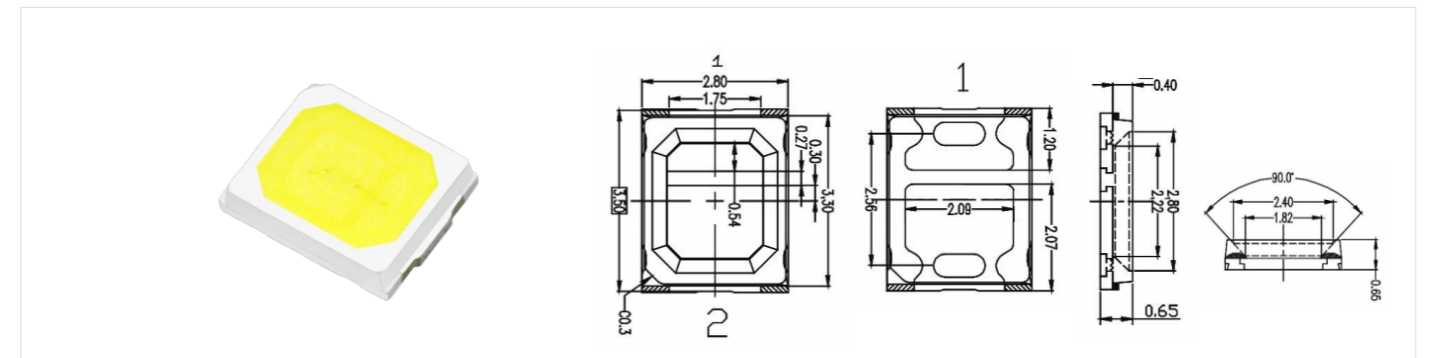
Package	Power (W)	Color	CCT (K)	CRI	Forward Voltage (V)	Forward Current (mA)	Luminous Flux (LM)	Viewing Angle (°)
LKL-E4014	0.2	White	3000-10000	80	2.8-3.4	60	24-30	120
LKL-E4014	0.5	White	3000-10000	80	2.8-3.4	150	50-70	120
LKL-E4014	1	White	3000-10000	80	5.8-6.4	150	90-120	120

3528 SMD LED



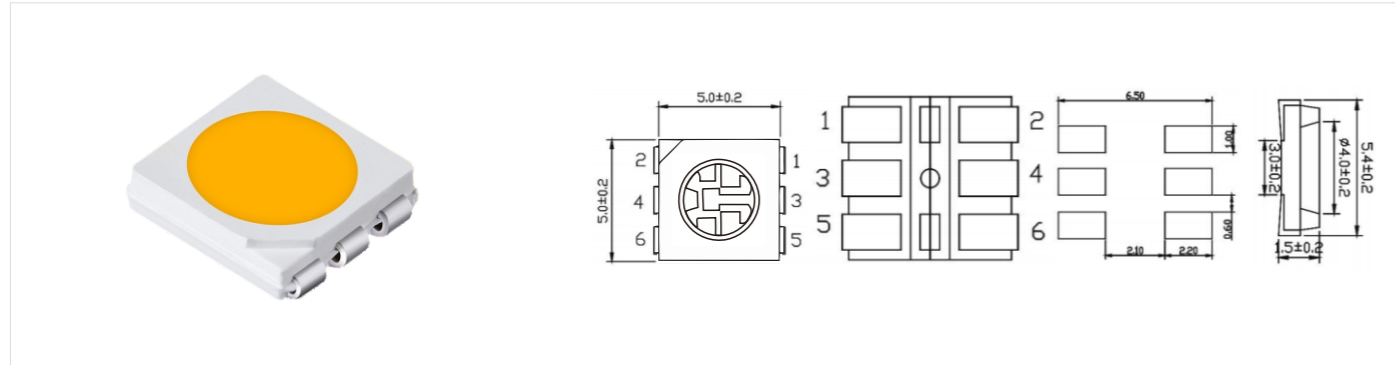
Package	Power (W)	Color	CCT (K)	CRI	Forward Voltage (V)	Forward Current (mA)	Luminous Flux (LM)	Viewing Angle (°)
LKL-3528	0.06	Phosphor Yellow	1600-2800	80	2.8-3.2	20	6-8	120
LKL-3528	0.06	White	3000-10000	80	2.8-3.4	20	7-10	120

2835 SMD LED



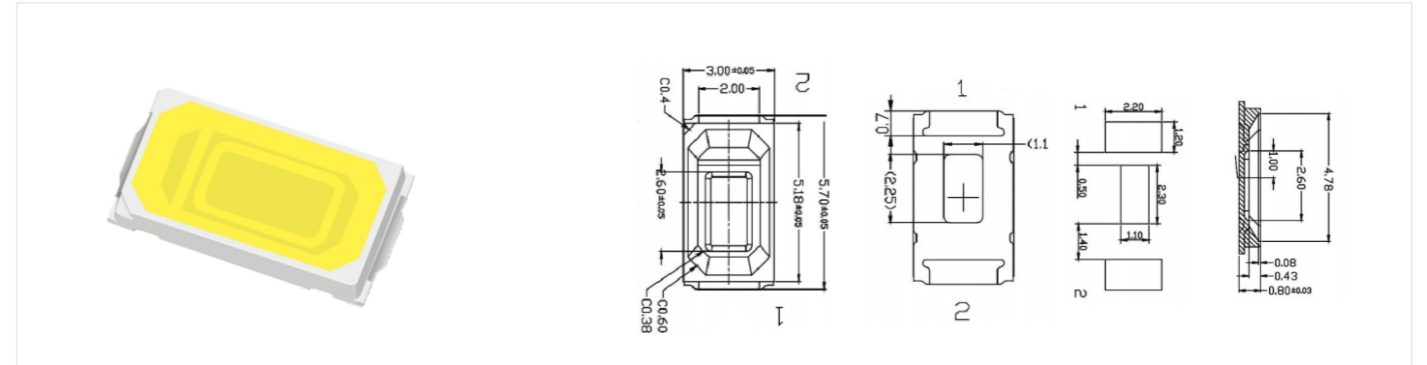
Package	Power (W)	Color	CCT (K)	CRI	Forward Voltage (V)	Forward Current (mA)	Luminous Flux (LM)	Viewing Angle (°)
LKL-2835	0.2	White	3000-10000	80	2.8-3.4	60	26-38	120
LKL-2835	0.5	White	3000-10000	80	2.8-3.4	150	55-85	120
LKL-2835	0.5	White	3000-6500	80	6/9/18	80/60/30	60-75	120
LKL-2835	1	White	3000-10000	80	5.8-6.4	300	110-150	120
LKL-2835	1	White	3000-6500	80	6/9/18	150/100/60	110-150	120

5050 SMD LED



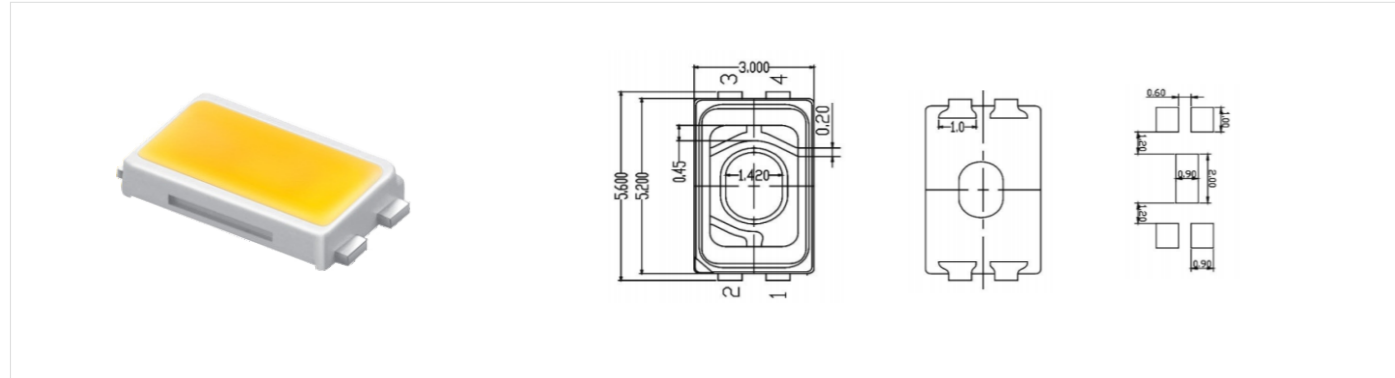
Package	Power (W)	Color	CCT (K)	CRI	Forward Voltage (V)	Forward Current (mA)	Luminous Flux (LM)	Viewing Angle (°)
LKL-5050	0.2	Phosphor Yellow	1600-2800	80/90	2.8-3.4	60	16-26	120
LKL-5050	0.2	White	3000-10000	80/90	2.8-3.4	60	20-28	120

5730 SMD LED



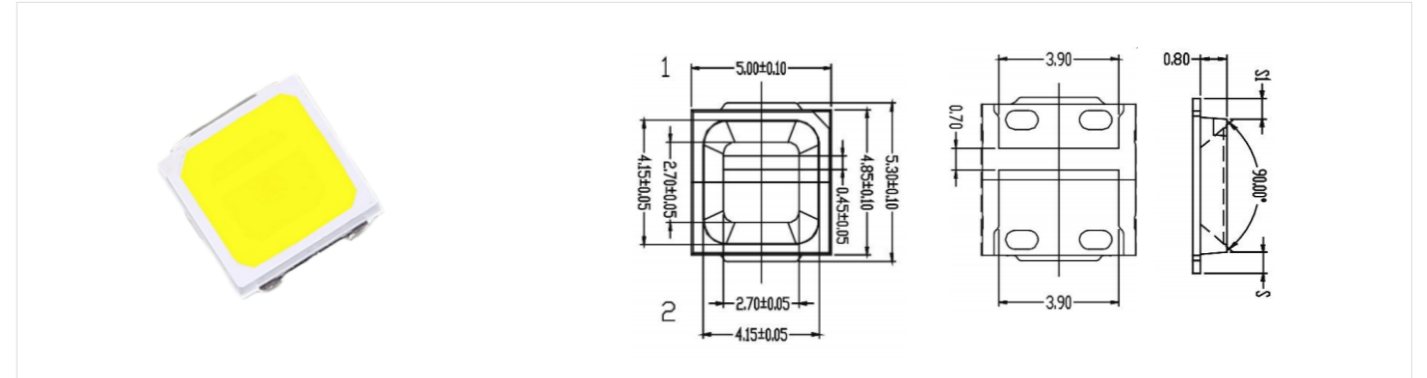
Package	Power (W)	Color	CCT (K)	CRI	Forward Voltage (V)	Forward Current (mA)	Luminous Flux (LM)	Viewing Angle (°)
LKL-5730	0.5	Phosphor Yellow	1600-2800	80/90	2.8-3.4	150	50-75	120
LKL-5730	0.5	White	3000-10000	80/90	2.8-3.4	150	60-85	120

5630 SMD LED



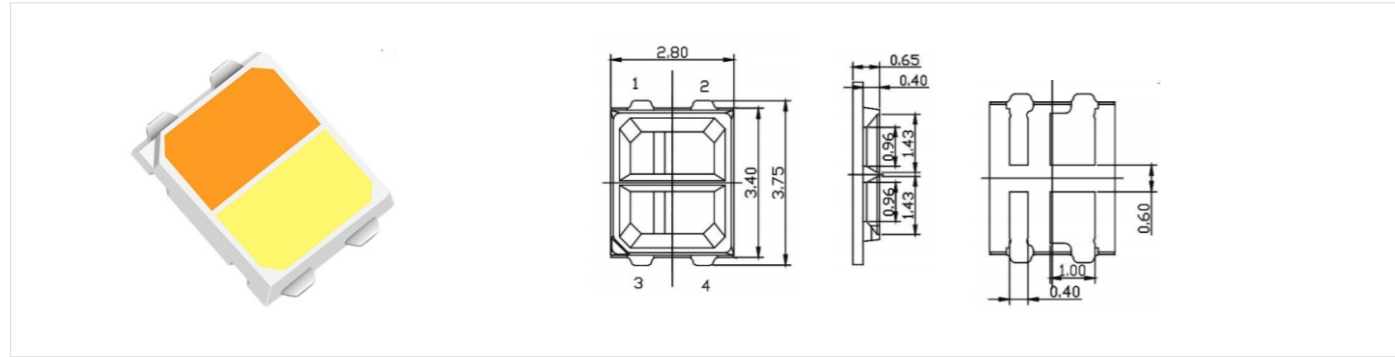
Package	Power (W)	Color	CCT (K)	CRI	Forward Voltage (V)	Forward Current (mA)	Luminous Flux (LM)	Viewing Angle (°)
LKL-5630	0.5	White	2800-10000	80	2.8-3.4	150	50-80	120
LKL-5630	1	White	2800-10000	80	2.8-3.4	300	110-160	120

5054 SMD LED



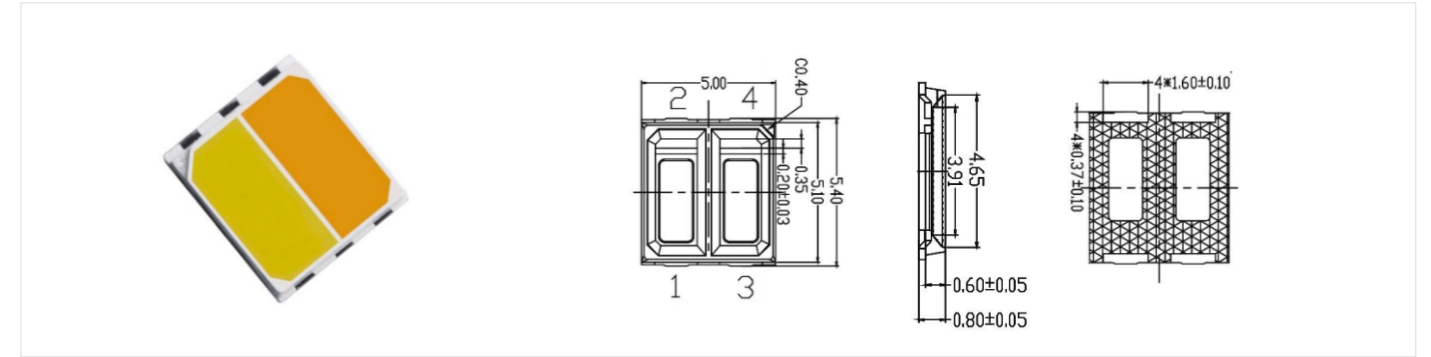
Package	Power (W)	Color	CCT (K)	CRI	Forward Voltage (V)	Forward Current (mA)	Luminous Flux (LM)	Viewing Angle (°)
LKL-5054	1	White	2800-10000	80	2.8-3.4	350	120-170	120
LKL-5054	1	White	2800-10000	80	6/9	150/100	110-170	120
LKL-5054	3	White	2800-6500	70	9	300	450-500	120

2835 Bi-Color LED



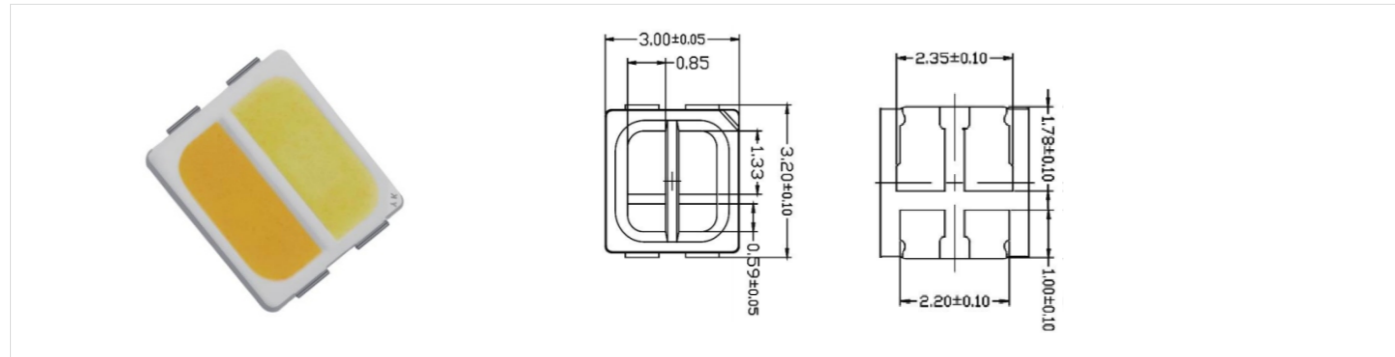
Package	Power (W)	Color	CCT (K)	CRI	Forward Voltage (V)	Forward Current (mA)	Luminous Flux (LM)	Viewing Angle (°)
LKL-2835B	0.4	Warm White	2000-5000	80	2.8-3.4	60	20-26	120
		White	5000-10000	80	2.8-3.4		24-30	
LKL-2835B	1	Warm White	2000-5000	80	2.8-3.4	60	45-65	120
		White	5000-10000	80	2.8-3.4		50-70	

5050 Bi-Color LED



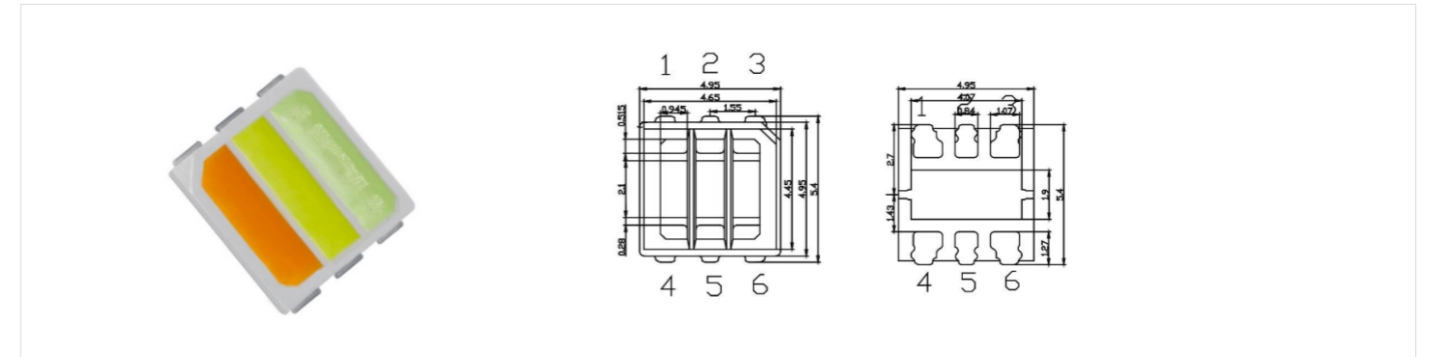
Package	Power (W)	Color	CCT (K)	CRI	Forward Voltage (V)	Forward Current (mA)	Luminous Flux (LM)	Viewing Angle (°)
LKL-5050B	0.4	White	5000-8000	70/80	2.8-3.4	60	22-30	120
		Warm White	2500-3500	70/80	2.8-3.4		20-28	
LKL-5050B	1	White	5000-8000	70/80	2.8-3.4	150	60-80	120
		Warm White	2500-3500	70/80	2.8-3.4		50-70	

3030 Bi-Color LED



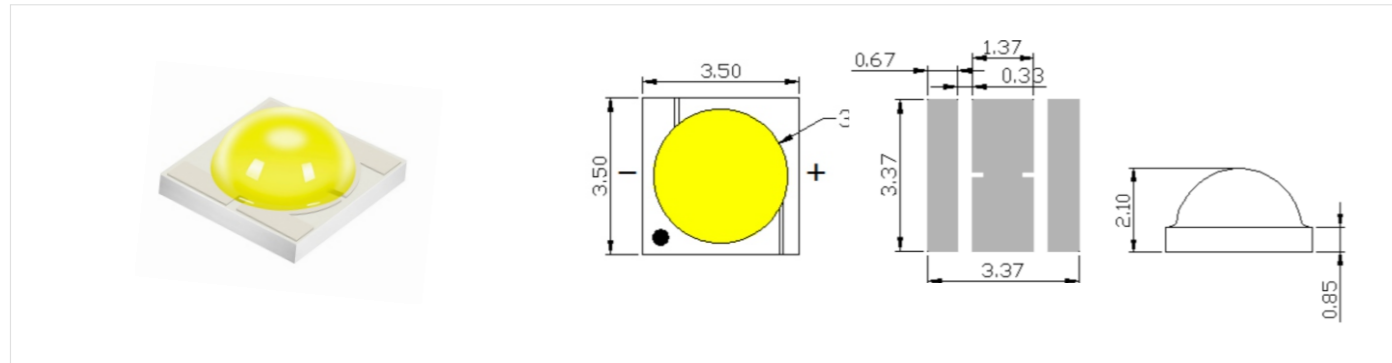
Package	Power (W)	Color	CCT (K)	CRI	Forward Voltage (V)	Forward Current (mA)	Luminous Flux (LM)	Viewing Angle (°)
LKL-3030B	1	White	5000-8000	70/80	2.8-3.4	150	50-70	120
		Warm White	2500-3000	70/80	2.8-3.4		50-65	
LKL-3030B	2	White	5000-8000	70/80	2.8-3.4	300	100-120	120
		Warm White	2500-3000	70/80	2.8-3.4		90-110	

5054 Tri-Color LED



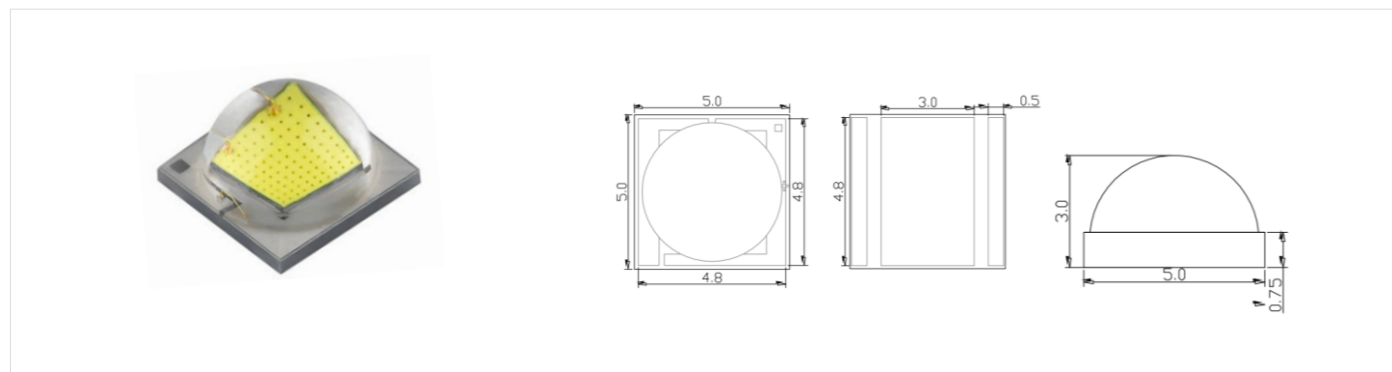
Package	Power (W)	Color	CCT (K)	CRI	Forward Voltage (V)	Forward Current (mA)	Luminous Flux (LM)	Viewing Angle (°)
LKL-5054T	0.6	White	5000-8000	70/80	2.8-3.4	60	22-30	120
		Natural White	3500-5000	70/80	2.8-3.4		22-30	
		Warm White	2500-3000	70/80	2.8-3.4		20-28	
LKL-5050T	1.5	White	5000-8000	70/80	2.8-3.4	150	60-80	120
		Natural White	3500-5000	70/80	2.8-3.4		60-80	
		Warm White	2500-3000	70/80	2.8-3.4		55-70	

3535 LED Ceramic



Package	Power (W)	Color	CCT (K)	CRI	Forward Voltage (V)	Forward Current (mA)	Luminous Flux (LM)	Viewing Angle (°)
LKL-3535	1	White	2700-8000	70/80	2.7-3.4	350	120-180	120
LKL-3535	3	White	2700-8000	70/80	2.7-3.4	700	200-340	120
LKL-3535	4	White	2700-8000	70/80	2.7-3.4	1200	450-500	120
LKL-3535	5	White	2700-8000	70/80	2.7-3.4	1500	570-630	120

5050 LED Ceramic



Package	Power (W)	Color	CCT (K)	CRI	Forward Voltage (V)	Forward Current (mA)	Luminous Flux (LM)	Viewing Angle (°)
LKL-C5050	10	White	5000-8000	70	2.8-3.8	3000	600-800	120

Function Lighting

02

UV LED

- UVC,UVB, UVA 270nm-420nm available
- Various packaging 2835, 3030, 3535, 5050, 6868...
- Different light beam angle 30, 60, 90, 120 degrees
- For Sterilization, Curing, Printing, Medical Beauty Equipment...

IR LED

- Accurate IR wavelength 730nm-1080nm...
- Various packaging 2835, 3030, 3535, 5050, 6868...
- Multi-color 2 in 1, 3 in 1, 4 in 1, 5 in 1 available
- Different light beam angle 30, 60, 90, 120 degrees
- For Surveillance, Face Recognition, Automotive Sensing, Medical,Physical Therapy...

Horticulture LED

- Accurate wavelength from 365nm-980nm
- High energy efficacy in umol/J, high PPF and PPFD
- Full spectrum for plant growing
- Customized spectrum for plant seedling, growth, flowering to fruiting

Studio LED

- High CRI95+ with high TLCI values
- Different color combine to the high TLCI
- Good color consistency



LEKOLED TECHNOLOGY CORPORATION

22

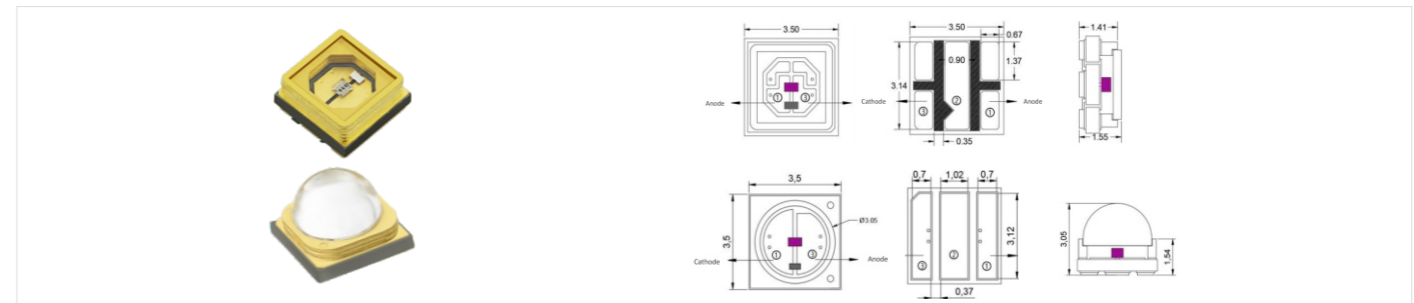
LEKOLED

UV Curing Exposure Detection Disinfection



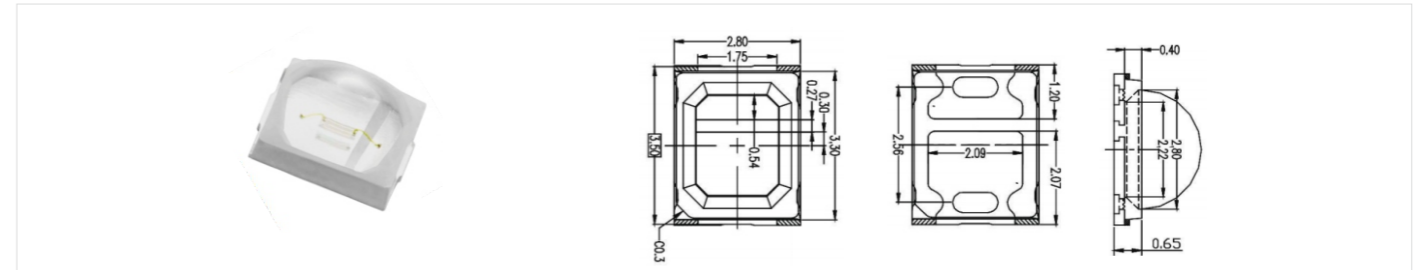
- UVC, UVB, UVA 255nm 275nm 310nm 365-420nm available
- Various Packaging 2835, 3030, 3535, 5050, 6868...
- High color uniformity, bi-color, 3 in 1, 4 in 1, 5 in 1 available
- Customized LEDs available

3535 UVC LED



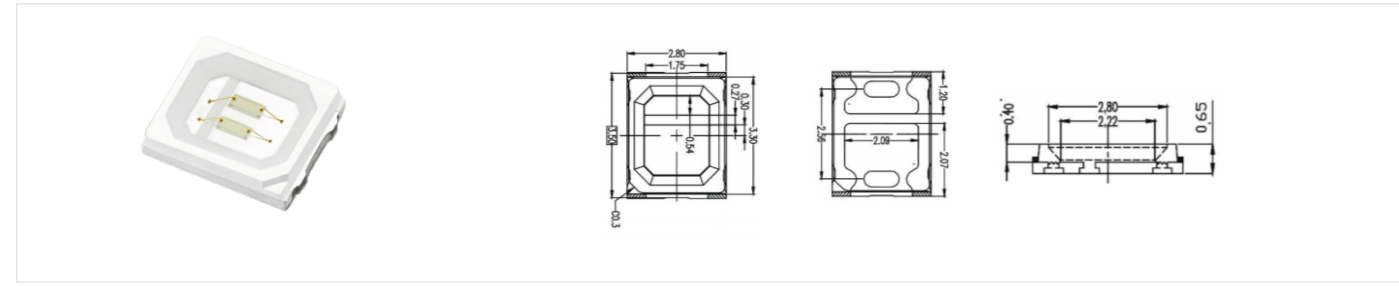
Package	Power (W)	Color	WL (nm)	Forward Voltage (V)	Forward Current (mA)	Radiant Flux (mw)	Viewing Angle (°)
LKL3535UVC1	0.7	UVC1	250-260	5.0-8.0	40	10-15	60
LKL-3535UVC	0.26	UVC	270-280	5.0-8.0	40	4-8	60/120
LKL-3535UVC	0.7	UVC	270-280	5.0-8.0	100	10-20	60/120
LKL-3535UVC	1	UVC	270-280	5.0-8.0	150	15-25	60/120
LKL-3535UVC	2.4	UVC	270-280	5.0-8.0	350	35-50	60/120
LKL-3535UVB	0.7	UVC	310-315	5.0-8.0	100	10-20	60/120
LKL-UVCA	0.7	UVC	270-280	5.0-8.0	100	10-20	60/120
		UVA	395-400	3.0-3.6	100	50-100	

2835 UVA LED



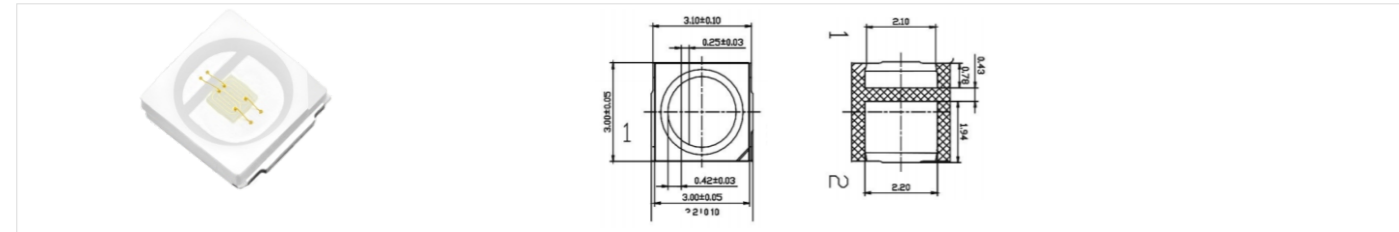
Package	Power (W)	Color	WL (nm)	Forward Voltage (V)	Forward Current (mA)	Radiant Flux (mw)	Viewing Angle (°)
LKL-2835TVX	0.2	UVA	365-420	3.0-3.8	60	30-80	120
LKL-2835TVX	0.5	UVA	365-420	3.0-3.8	150	50-200	120

2835 UVA LED



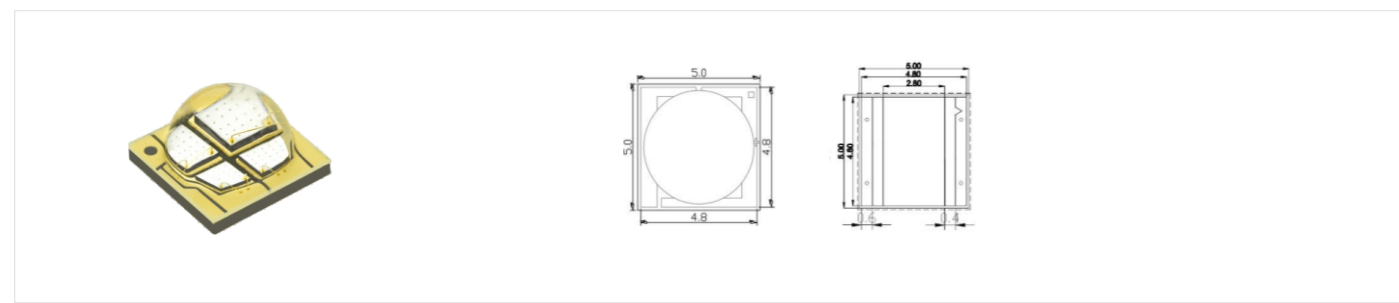
Package	Power (W)	Color	WL (nm)	Forward Voltage (V)	Forward Current (mA)	Radiant Flux (mw)	Viewing Angle (°)
LKL-2835VX	0.5	UVA	365-420	3.0-3.8	150	30-80	120
LKL-2835VX	1	UVA	365-420	3.0-3.8	300	50-200	120

3030 UVA LED



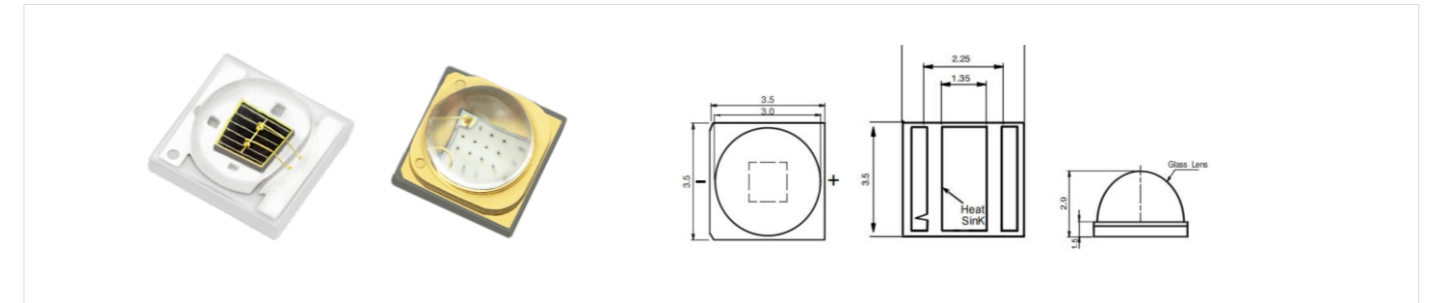
Package	Power (W)	Color	WL (nm)	Forward Voltage (V)	Forward Current (mA)	Radiant Flux (mw)	Viewing Angle (°)
LKL-3030VX	1	UVA	365-420	3.0-3.8	300	170-300	120

5050 UVA LED



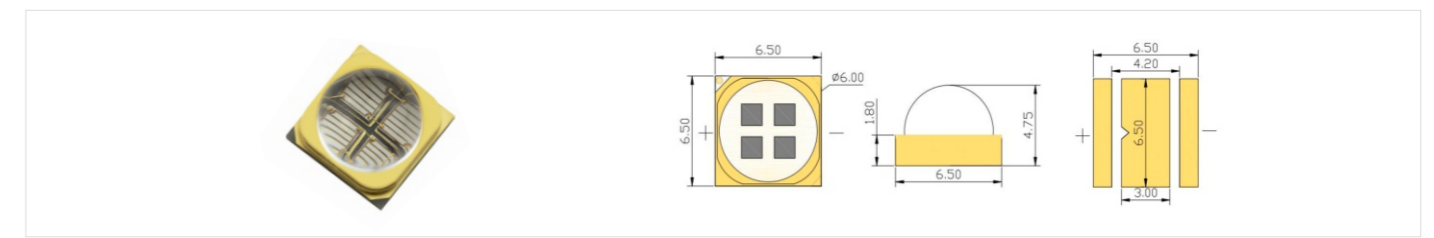
Package	Power (W)	Color	WL (nm)	Forward Voltage (V)	Forward Current (mA)	Radiant Flux (mw)	Viewing Angle (°)
LKL-C5050VX	6	UVA	365-420	6.0-8.0	1000	2500-5000	120
LKL-C5050VX	6	UVA	365-420	3.0-4.0	2000	2500-5000	120

3535 UVA LED



Package	Power (W)	Color	WL (nm)	Forward Voltage (V)	Forward Current (mA)	Radiant Flux (mw)	Viewing Angle (°)
LKL-3535V1A2XSL45	1-3	UVA	365-370	3.0-3.8	350-1000	400-1500	45/60/90/120
LKL-3535V2A3XSL45	1-3	UVA	380-385	3.0-3.8	350-1000	600-1700	45/60/90/120
LKL-3535V3A3XSL45	1	UVA	385-395	3.0-3.8	350-1000	600-1700	45/60/90/120
LKL-3535V4A3XSL45	1-3	UVA	395-400	3.0-3.8	350-1000	700-1800	45/60/90/120
LKL-3535V5A2XSE45	1-3	UVA	400-410	3.0-3.8	350-1000	400-1200	45/60/90/120
LKL-3535V6A2XSG45	1-3	UVA	410-420	3.0-3.8	350-1000	400-1200	45/60/90/120
LKL-35V1A8116GG56	5	UVA	365-370	3.0-3.8	1500	3000-3500	45/60/90/120
LKL-35V3A8116GG56	5	UVA	380-390	3.0-3.8	1500	3000-3500	45/60/90/120
LKL-35V4A8116GG56	5	UVA	395-400	3.0-3.8	1500	3000-3500	45/60/90/120

6868 UVA LED



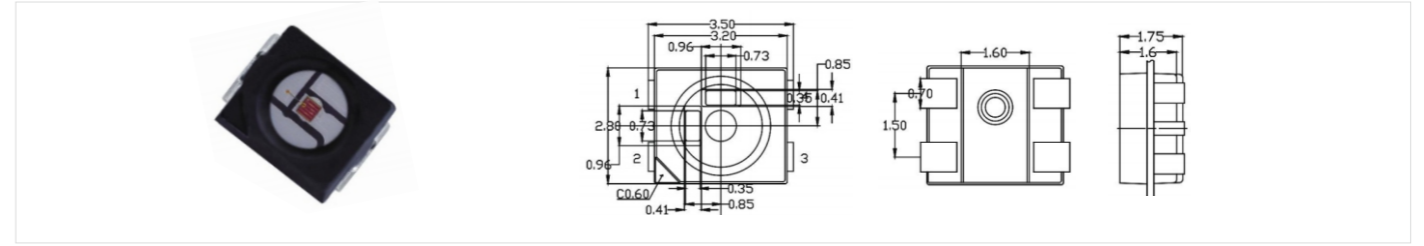
Package	Power (W)	Color	WL (nm)	Forward Voltage (V)	Forward Current (mA)	Radiant Flux (mw)	Viewing Angle (°)
LKL-N6868VX	18	UVA	365-420	6.0-8.0	1400-3000	2000-7000	60
LKL-N6868VX	18	UVA	365-420	12-14	1500	2000-7000	60

IR Security Monitoring Medical Beauty, Physical Therapy



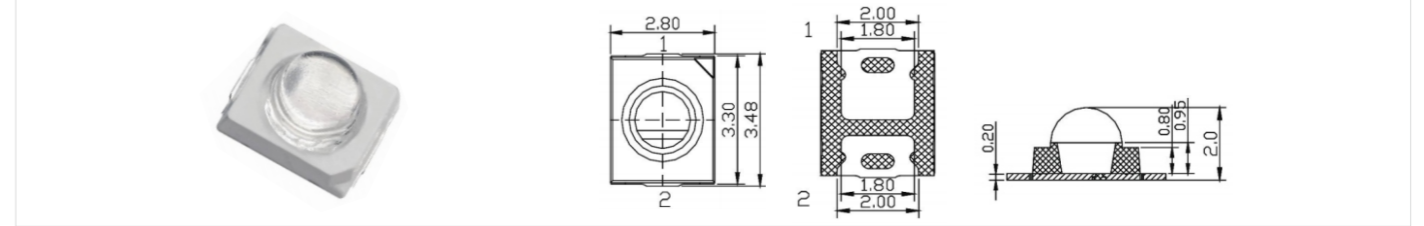
- IR LED 730nm-980nm available
- Various Packaging 2835, 3030, 3535, 5050, 6868...
- High color uniformity, bi-color, 3 in 1, 4 in 1, 5 in 1 available
- For Medical Beauty, Physical Therapy
- Customized LEDs available

3528 IR LED



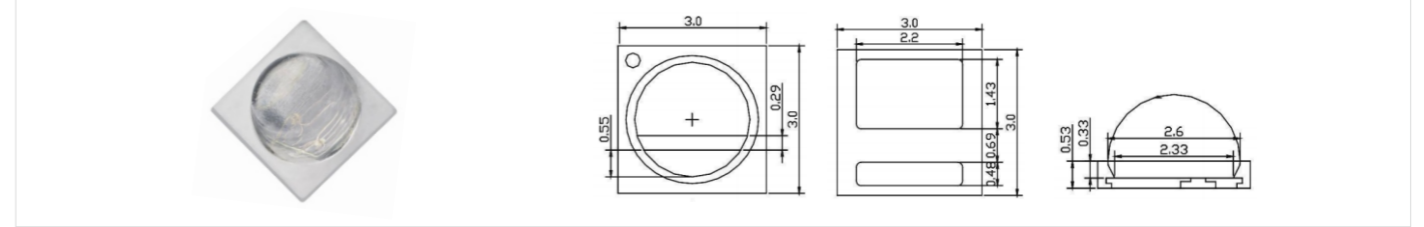
Package	Power (W)	Color	WL (nm)	Forward Voltage (V)	Forward Current (mA)	Radiant Flux (mW)	Viewing Angle (°)
LKL-3528RX-B	0.1	IR	850-940	1.2-1.6	30	10-20	120
LKL-3528RX-B	0.2	IR	850-940	1.2-1.6	60	30-50	120

2835 IR LED



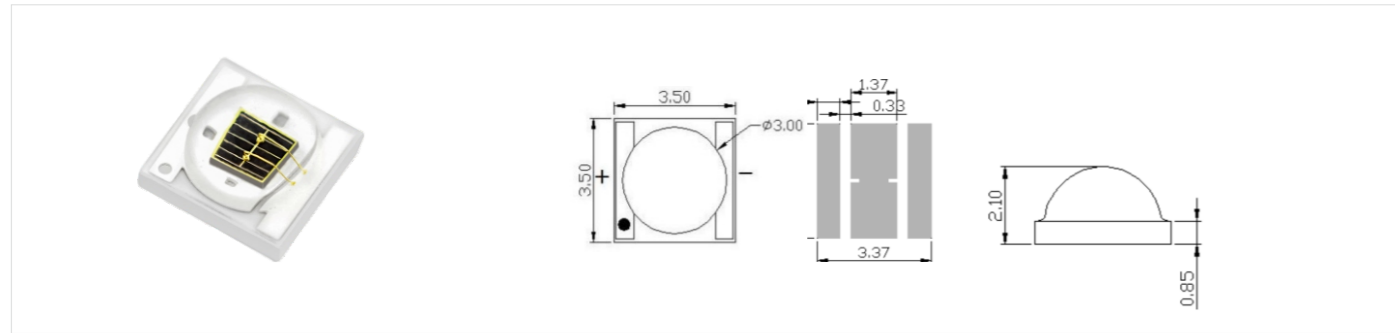
Package	Power (W)	Color	WL (nm)	Forward Voltage (V)	Forward Current (mA)	Radiant Flux (mW)	Viewing Angle (°)
LKL-2835TRX	0.2	IR	850-940	1.2-1.5	60	30-50	30
LKL-2835TRX	0.5	IR	850-940	1.3-1.8	150	70-120	30
LKL-2835TRX	1	IR	850-940	1.3-1.8	350	150-300	30

3030 IR LED



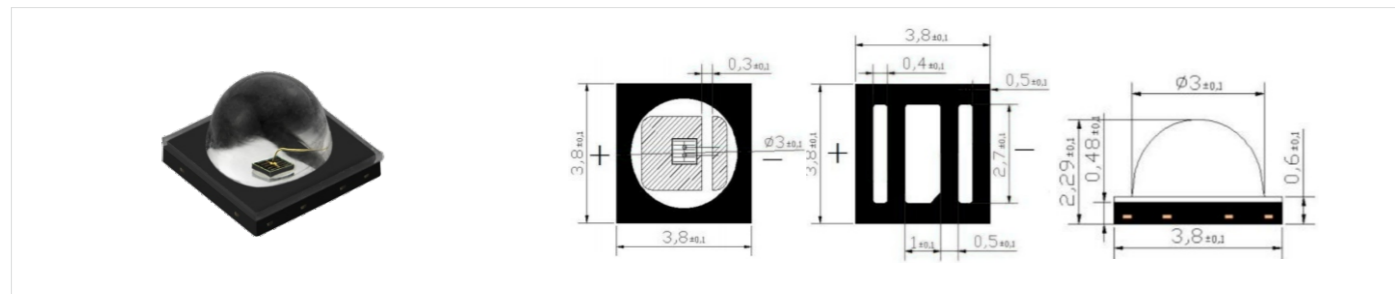
Package	Power (W)	Color	WL (nm)	Forward Voltage (V)	Forward Current (mA)	Radiant Flux (mW)	Viewing Angle (°)
LKL-3030TRX	1	IR	850-940	1.3-1.8	350	200-400	30/60
LKL-3030TRX	2	IR	850-940	1.3-1.8	600	500-700	30/60
LKL-3030TRX	3	IR	850-940	1.3-1.8	1000	800-1100	30/60

3535 IR LED



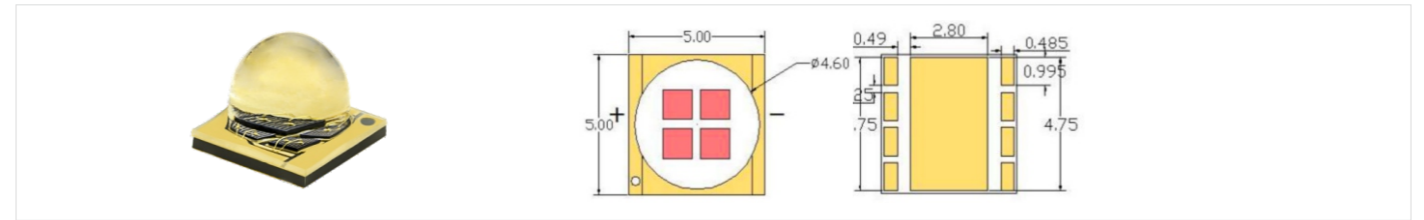
Package	Power (W)	Color	WL (nm)	Forward Voltage (V)	Forward Current (mA)	Radiant Flux (mW)	Viewing Angle (°)
LKL-3535RX	1-2	IR	730	1.3-1.8	350-700	250-600	120
LKL-3535RX	1-2	IR	760	1.6-2.3	350-700	300-800	60/120
LKL-3535RX	1-2	IR	810	1.6-2.3	350-700	300-800	60/120
LKL-3535RX	1-3	IR	850	1.6-1.8	350-1000	250-1000	60/120
LKL-3535RX	1-2	IR	880	1.2-1.8	350-700	200-700	60/120
LKL-3535RX	1-3	IR	940	1.4-1.6	350-1000	200-800	60/120
LKL-3535RX	1-2	IR	980	1.2-1.8	350-700	300-800	60/120
LKL-3535RX	1-2	IR	1020	1.2-1.8	350-700	150-200	60/120

3838 IR LED



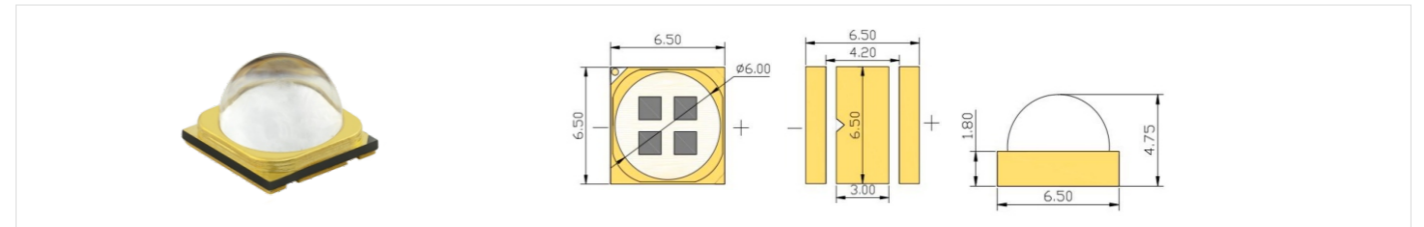
Package	Power (W)	Color	WL (nm)	Forward Voltage (V)	Forward Current (mA)	Radiant Flux (mW)	Viewing Angle (°)
LKL-3838RX	3	IR	810	2.8-3.6	1000	500-1000	90
LKL-3838RX	3	IR	850	1.6-2.4	1000	500-700	90
LKL-3838RX	3	IR	940	1.3-1.8	1000	800-1100	90

5050 IR LED



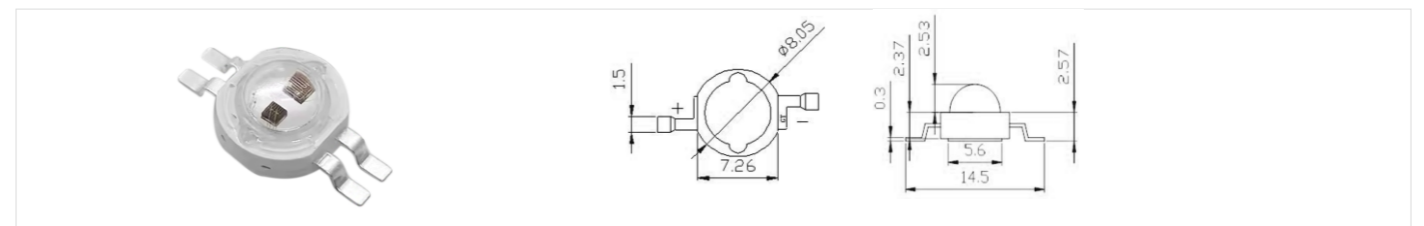
Package	Power (W)	Color	WL (nm)	Forward Voltage (V)	Forward Current (mA)	Radiant Flux (mW)	Viewing Angle (°)
LKL-C5050RX	6	IR	810	6.0-6.4	1000	1000-1200	60/120
LKL-C5050RX	6	IR	830	6.0-6.4	1000	1000-1200	60/120
LKL-C5050RX	6	IR	850	6.0-6.4	1000	1000-1200	60/120
LKL-C5050RX	6	IR	940	4.5-5.5	1000	1000-1200	60/120

6868 IR LED



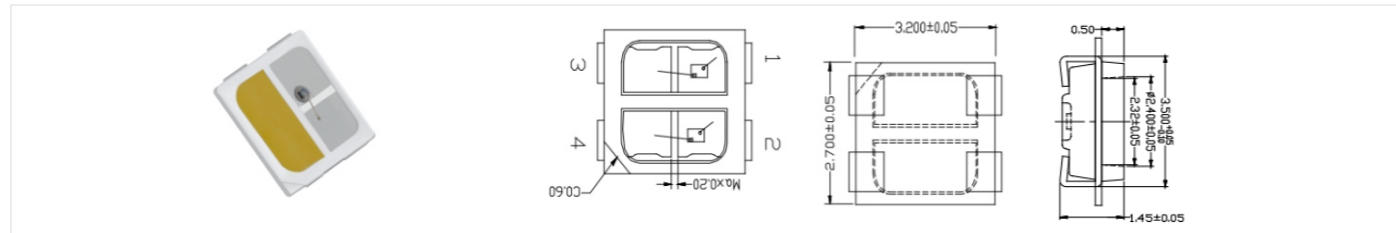
Package	Power (W)	Color	WL (nm)	Forward Voltage (V)	Forward Current (mA)	Radiant Flux (mW)	Viewing Angle (°)
LKL-6868RX	6	IR	810	6.0-6.4	1000	1000-1200	60/120
LKL-6868RX	6	IR	830	6.0-6.4	1000	1000-1200	60/120
LKL-6868RX	6	IR	850	6.0-6.4	1000	1000-1200	60/120
LKL-6868RX	6	IR	940	4.5-5.5	1000	1000-1200	60/120

K2 IR LED



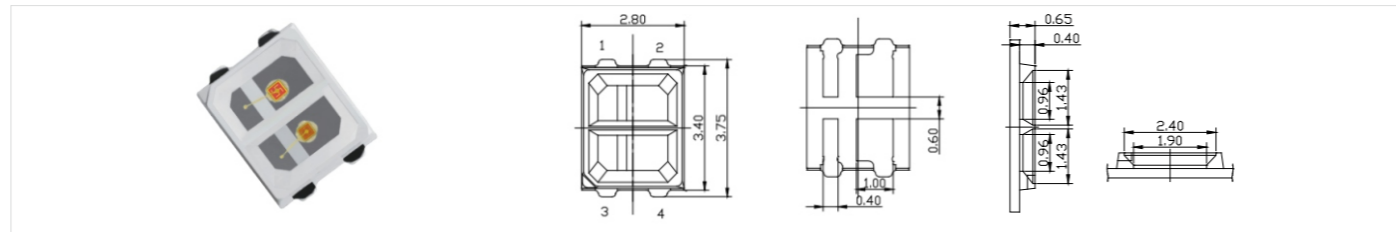
Package	Power (W)	Color	WL (nm)	Forward Voltage (V)	Forward Current (mA)	Radiant Flux (mW)	Viewing Angle (°)
LKL-K2RX	2	IR	850	1.8-2.4	1000	300-500	60/120
LKL-K2RX	2	IR	940	1.8-2.4	1000	300-500	60/120

3527 W+R LED



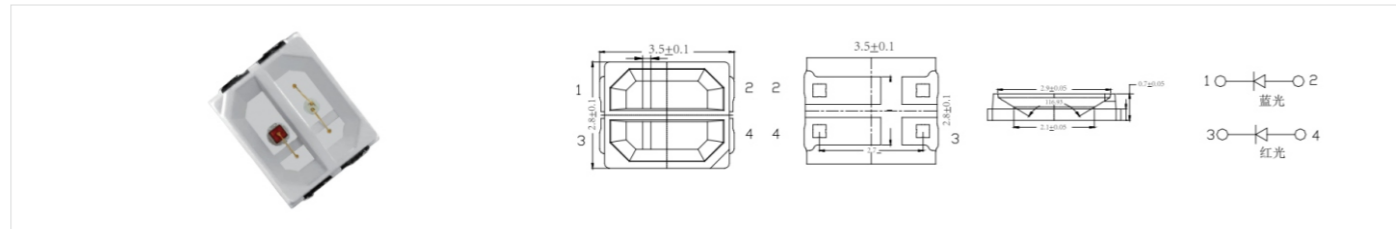
Package	Power (W)	Color	Emitting Color	WL (nm)	Forward Voltage (V)	Forward Current (mA)	Luminous Flux (LM)	Viewing Angle (°)
LKL-3527WR	0.1	W+R	White	5000-8000K	2.8-3.4	30	10-15	120
			Red	620-660	2.0-2.4	30	2-4	

2835 IR+DR LED



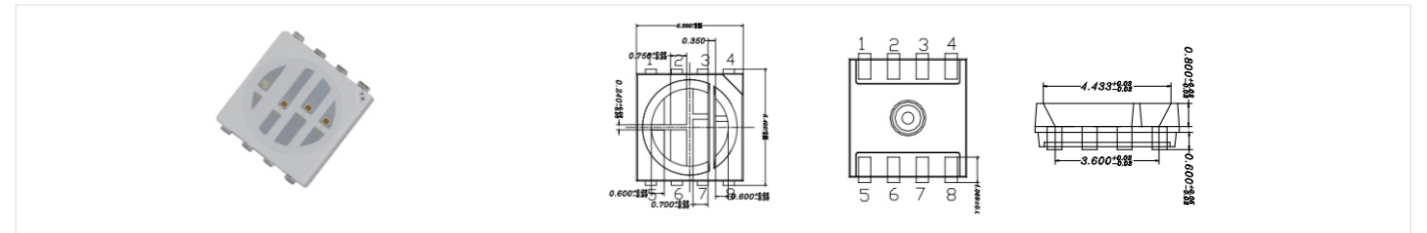
Package	Power (W)	Color	Emitting Color	WL (nm)	Forward Voltage (V)	Forward Current (mA)	Luminous Flux (LM)	Viewing Angle (°)
LKL-2835IRDR	0.2	IR+DR	IR	850	1.4-1.8	60	15-20	120
			Deep Red	660	2.0-2.4	60	2-3	

2835 R+B LED



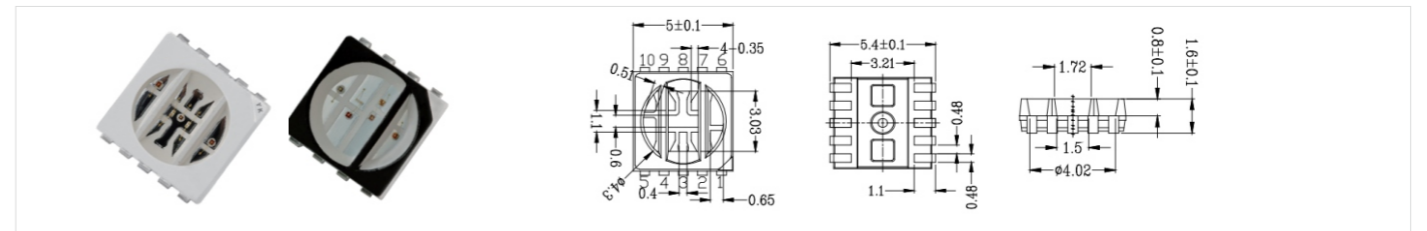
Package	Power (W)	Color	Emitting Color	WL (nm)	Forward Voltage (V)	Forward Current (mA)	Luminous Flux (LM)	Viewing Angle (°)
LKL-2835RB	0.5	B+R	Blue	440-470	2.8-3.4	150	10-20	120
			Red	620-630	2.0-2.4	150	15-25	

5050 B+R+Y+IR LED



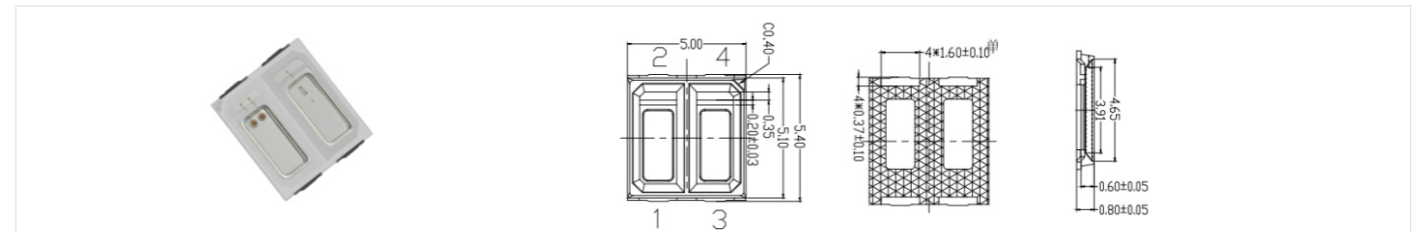
Package	Power (W)	Color	Emitting Color	WL (nm)	Forward Voltage (V)	Forward Current (mA)	Luminous Flux (LM)	Viewing Angle (°)
LKL-5050BRYIR	0.25	BRYIR	Red	620-660	1.8-2.4	20	2-4	120
			Yellow	585-595	1.8-2.4	20	2-3	
			Blue	450-470	2.8-3.4	20	1-2	
			IR	850-940	1.3-1.8	20	10-20mW	

5050 B+R+Y+A+IR LED



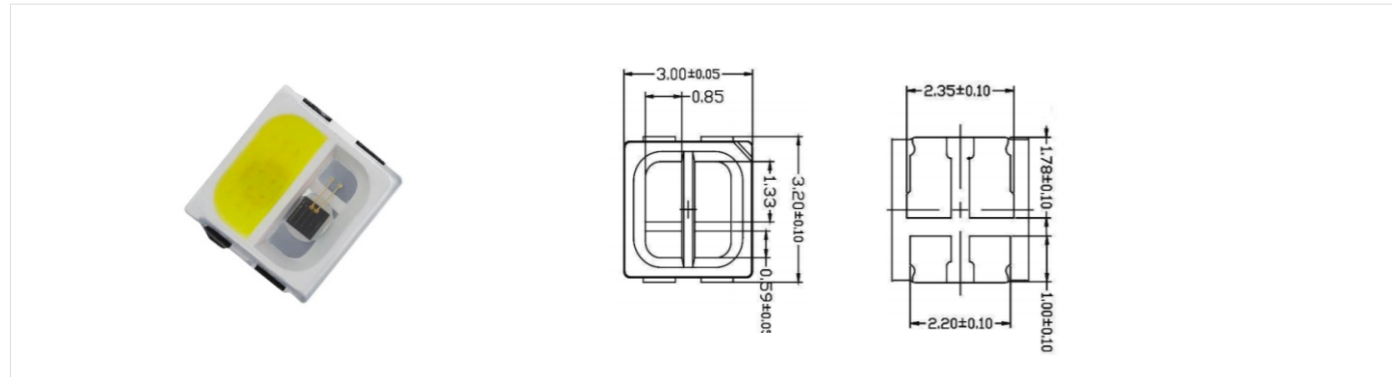
Package	Power (W)	Color	Emitting Color	WL (nm)	Forward Voltage (V)	Forward Current (mA)	Luminous Flux (LM)	Viewing Angle (°)
LKL-5050BRYAIR	0.25	BRYAIR	Red	620-660	1.8-2.4	30	2-4	120
			Blue	450-470	2.8-3.4	30	1-2	
			Yellow	585-595	2.0-2.4	30	2-4	
			Amber	600-610	2.0-2.4	30	2-4	
			IR	850-940	1.3-1.5	30	10-20mW	

5050 R+B LED



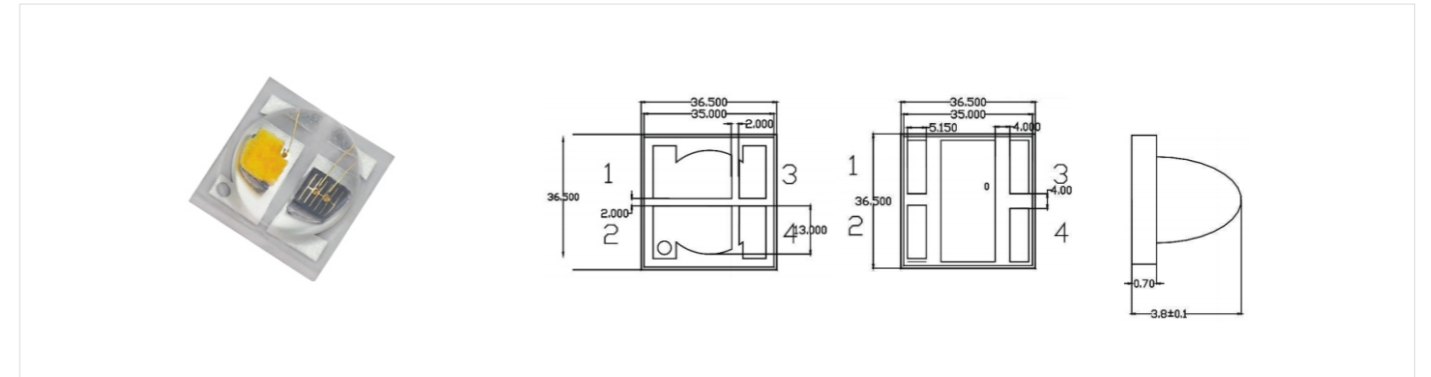
Package	Power (W)	Color	Emitting Color	WL (nm)	Forward Voltage (V)	Forward Current (mA)	Luminous Flux (LM)	Viewing Angle (°)
LKL-5050RB	0.4	R+B	Red	610-630	2.0-2.4	60	7-10	120
			Blue	450-470	2.8-3.4	60	3-6	

3030 W+IR LED



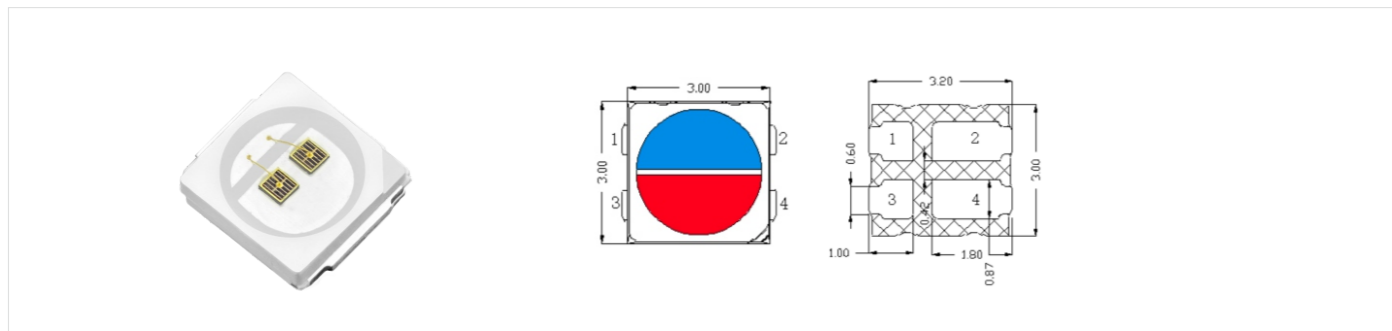
Package	Power (W)	Color	Emitting Color	WL (nm)	Forward Voltage (V)	Forward Current (mA)	Luminous Flux (LM)	Viewing Angle (°)
LKL-3030WIR	0.4	W+IR	White	5000-8000	2.8-3.4	60	22-28	120
			IR	850-940	1.2-1.6	60	30-50mW	
LKL-3030WIR	1	W+IR	White	5000-8000	2.8-3.4	150	50-70	120
			IR	850-940	1.2-1.6	150	100-150mW	

3535 W+IR LED



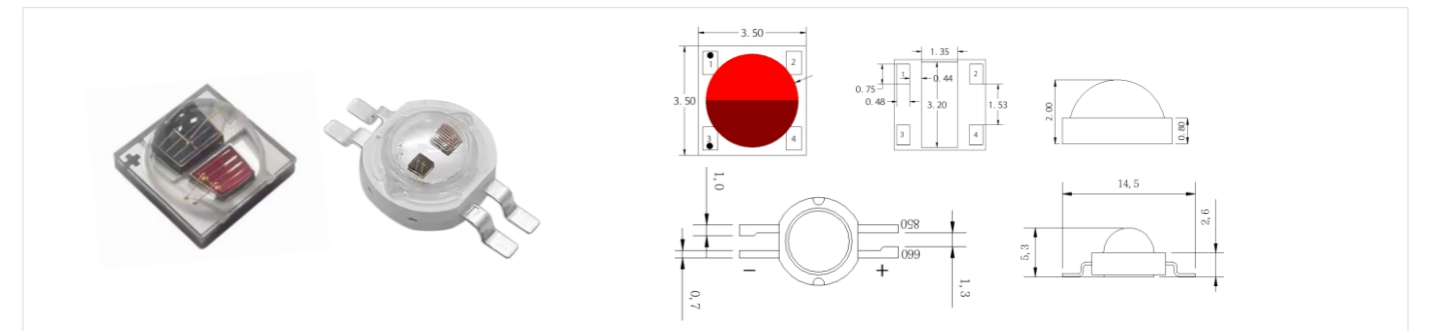
Package	Power (W)	Color	Emitting Color	WL (nm)	Forward Voltage (V)	Forward Current (mA)	Luminous Flux (LM)	Viewing Angle (°)
LKL-3535WIR	2	W+IR	White	3000-8000	2.8-3.4	300	100-150	30/60/90/120
			IR	850-940	1.2-1.6	300	300-400mW	
LKL-3535WIR	4	W+IR	White	3000-8000	2.8-3.4	500	180-220	30/60/90/120
			IR	850-940	1.2-1.6	500	500-600mW	

3030 LED Bi-Color



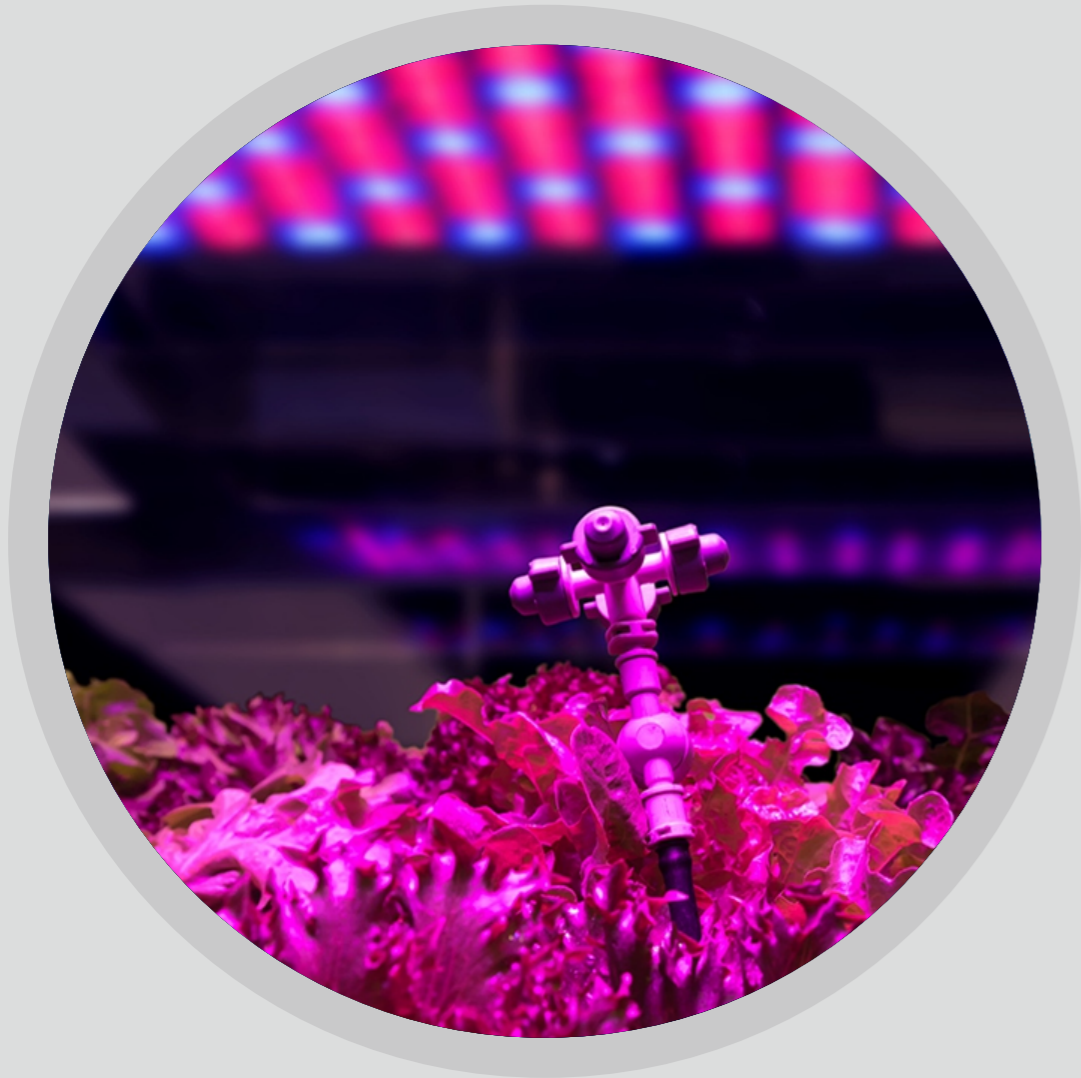
Package	Power (W)	Color	Emitting Color	WL (nm)	Forward Voltage (V)	Forward Current (mA)	Luminous Flux (LM)	Viewing Angle (°)
LKL-3030BDR	1	B+DR	Blue	450-460	2.8-3.4	150	5-10	120
			Deep Red	655-665	2.0-2.4	150	15-20	
LKL-3030IRDR	1	IR+DR	IR	840-850	1.4-2.0	150	50-150mW	120
			Deep Red	655-665	1.8-2.4	150	15-20	
LKL-3030DRY	1	DR+Y	Deep Red	655-665	2.0-2.4	150	15-20	120
			Yellow	590-600	2.0-2.4	150	15-20	

3535/K2 Bi-Color LED



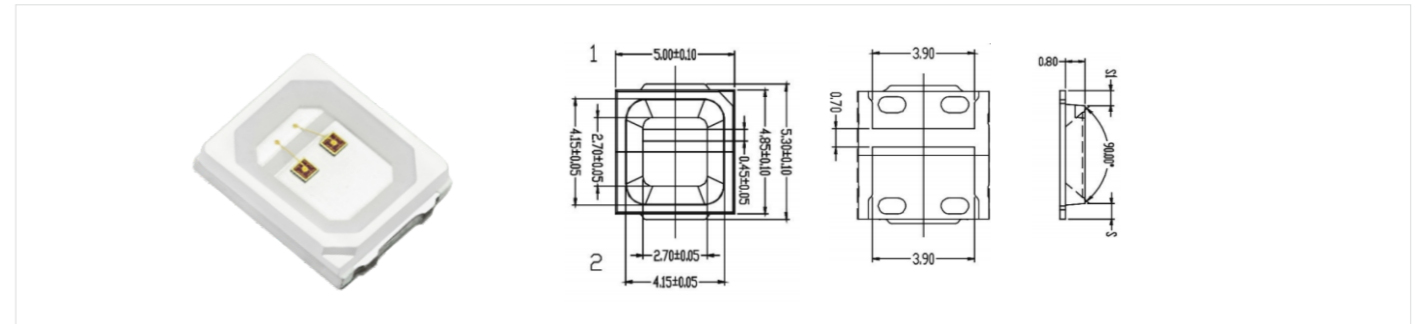
Package	Power (W)	Color	Emitting Color	WL (nm)	Forward Voltage (V)	Forward Current (mA)	Luminous Flux (LM)	Viewing Angle (°)
LKL-3535DRIR	3	DR+IR	Deep Red	655-665	2.0-2.4	500	600-800	120
			IR	845-855	1.4-1.8	700	400-600	
LKL-K2DRIR	3	DR+IR	Deep Red	655-665	2.0-2.6	700	40-50LM	120
			IR	850-860	1.8-2.2	700	300-500	

Horticulture Lighting



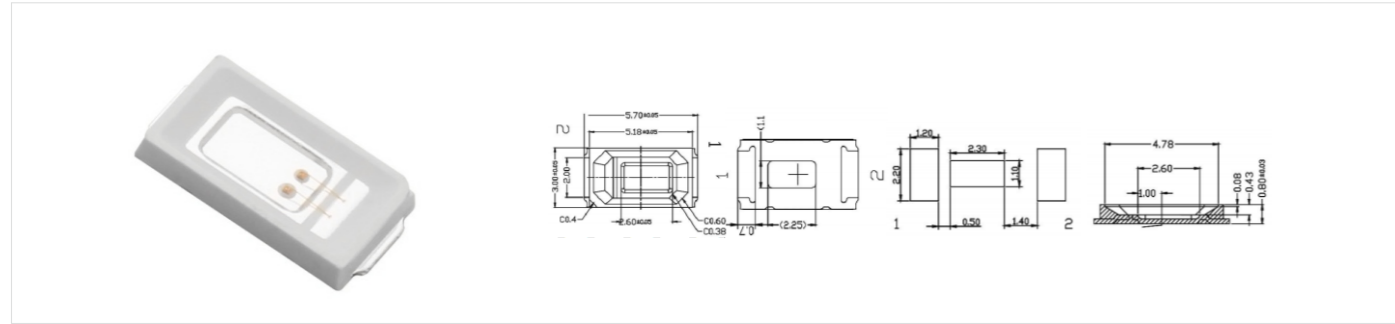
- 450-455nm, 620-630nm, 660-665nm, 730nm, Full Spectrum
- Various Packaging 2835, 5730, 3030, 3535, K2...
- High color uniformity, bi-color, 3 in 1, 4 in 1, 5 in 1 available
- High PPFD Value for planting growing

2835 Horticulture LED



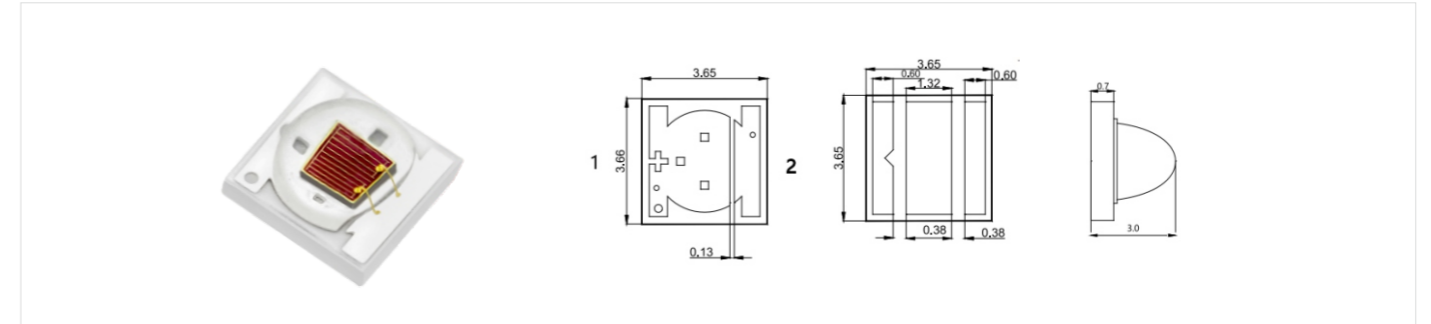
Package	Power (W)	Color	WL (nm)	Forward Voltage (V)	Forward Current (mA)	Radiant Flux (mW)	Viewing Angle (°)
LKL-2835RB	0.2	Royal Blue	440-450	2.8-3.4	60	3-4	120
LKL-2835B2	0.2	Blue	450-455	2.8-3.4	60	3-4	120
LKL-2835B3	0.2	Blue	460-470	2.8-3.4	60	4-6	120
LKL-2835G2	0.2	Green	520-525	2.8-3.4	60	18-20	120
LKL-2835Y4	0.2	Yellow	590-595	2.0-2.6	60	7-9	120
LKL-2835A6	0.2	Amber	600-610	2.0-2.6	60	7-9	120
LKL-2835R1	0.2	Red	620-630	2.0-2.6	60	7-12	120
LKL-2835DR	0.2	Deep Red	660-665	2.0-2.6	60	3-5	120
LKL-2835IR2	0.2	IR	730-740	2.0-2.6	60	/	120
LKL-2835FS	0.2	Full Spectrum	3000-6500K	2.8-3.4	60	/	120
LKL-2835RB	0.5	Royal Blue	440-450	2.8-3.4	150	7-9	120
LKL-2835B2	0.5	Blue	450-455	2.8-3.4	150	8-10	120
LKL-2835B3	0.5	Blue	460-470	2.8-3.4	150	9-12	120
LKL-2835G2	0.5	Green	520-525	2.8-3.4	150	40-45	120
LKL-2835Y4	0.5	Yellow	590-595	2.0-2.6	150	18-20	120
LKL-2835A6	0.5	Amber	600-610	2.0-2.6	150	15-18	120
LKL-2835R1	0.5	Red	620-630	2.0-2.6	150	20-22	120
LKL-2835DR	0.5	Deep Red	660-665	2.0-2.6	150	6-8	120
LKL-2835IR2	0.5	IR	730-740	2.0-2.6	150	/	120
LKL-2835FS	0.5	Full Spectrum	3000-6500K	2.8-3.4	150	/	120

5730 Horticulture LED



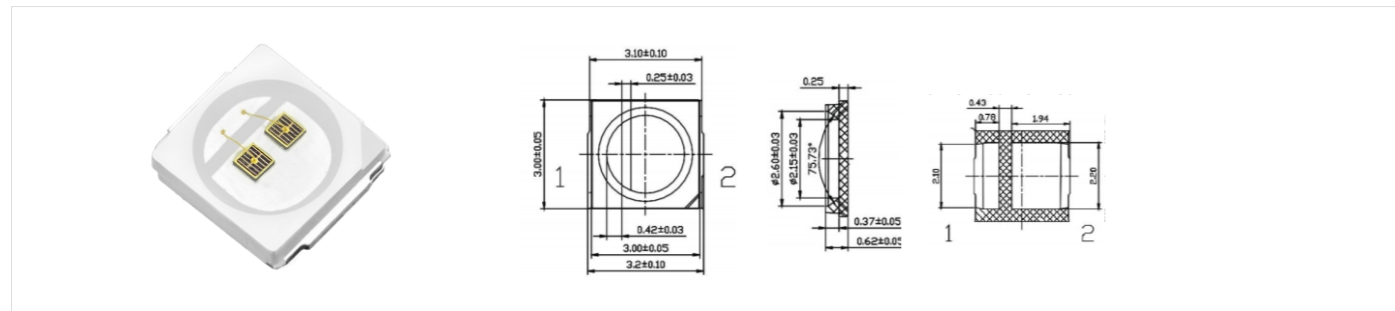
Package	Power (W)	Color	WL (nm)	Forward Voltage (V)	Forward Current (mA)	Radiant Flux (mW)	Viewing Angle (°)
LKL-5730BX	0.5	Blue	440-470	2.8-3.4	150	8-12	120
LKL-5730G2	0.5	Green	520-530	2.8-3.4	150	40-45	120
LKL-5730Y4	0.5	Yellow	590-595	2.0-2.6	150	18-22	120
LKL-5730R1	0.5	Red	620-630	2.0-2.6	150	20-22	120
LKL-5730DR	0.5	Deep Red	660-665	2.0-2.6	150	7-9	120

3535 Horticulture LED



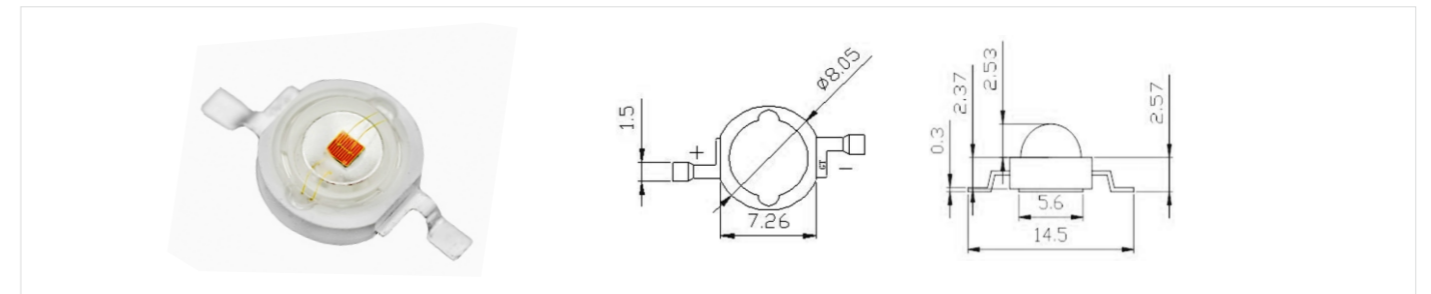
Package	Power (W)	Color	WL (nm)	Forward Voltage (V)	Forward Current (mA)	Luminous Flux (LM)350mA	Viewing Angle (°)
LKL-3535BX	1-3	Blue	440-470	2.8-3.4	350-700	20-40	120
LKL-3535G2	1-3	Green	520-530	2.8-3.4	350-700	125-135	120
LKL-3535Y4	1-3	Yellow	590-595	2.0-2.6	350-700	50-70	120
LKL-3535R1	1-3	Red	620-630	2.0-2.6	350-700	60-80	120
LKL-3535DR	1-3	Deep Red	660-665	2.0-2.6	350-700	30-50	120

3030 Horticulture LED

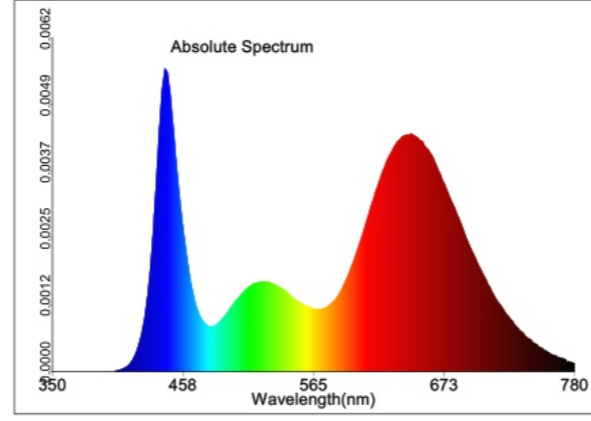
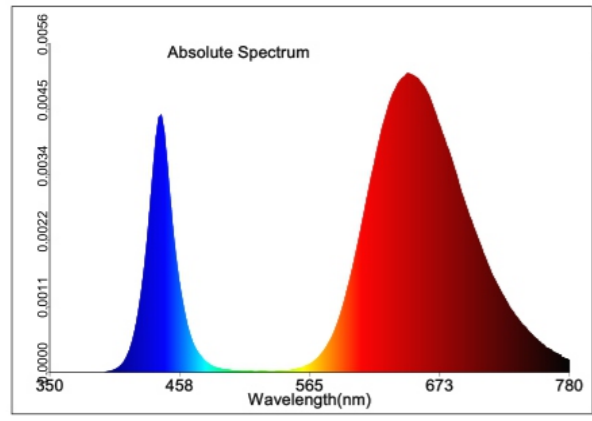
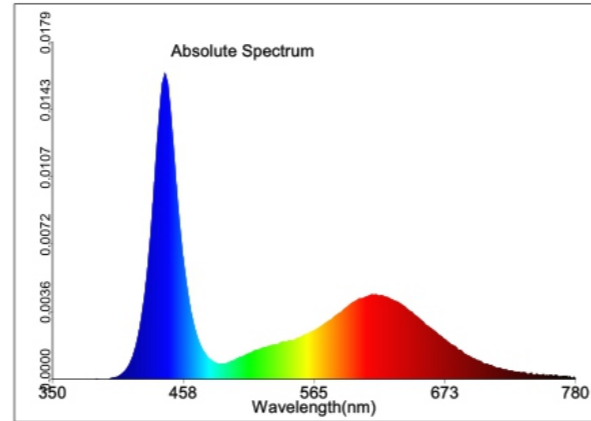
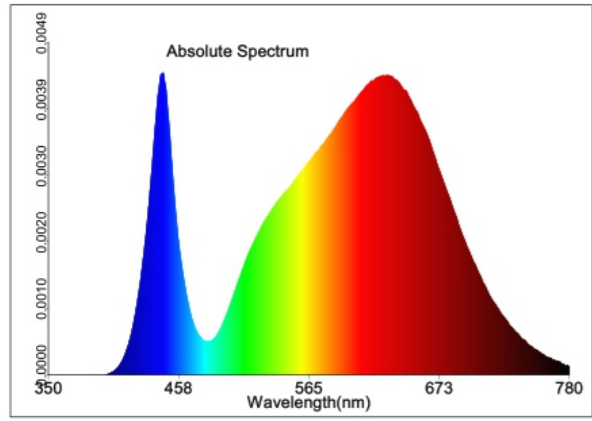
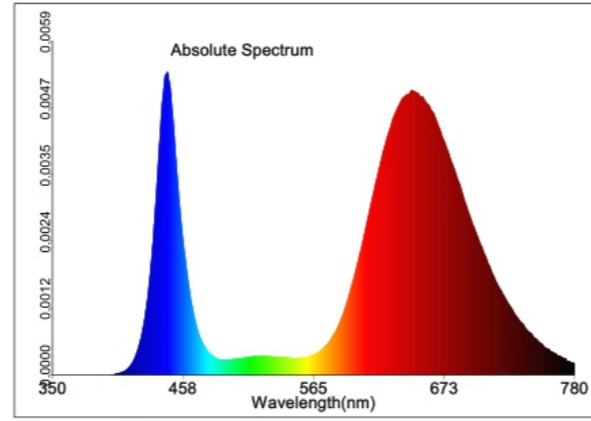
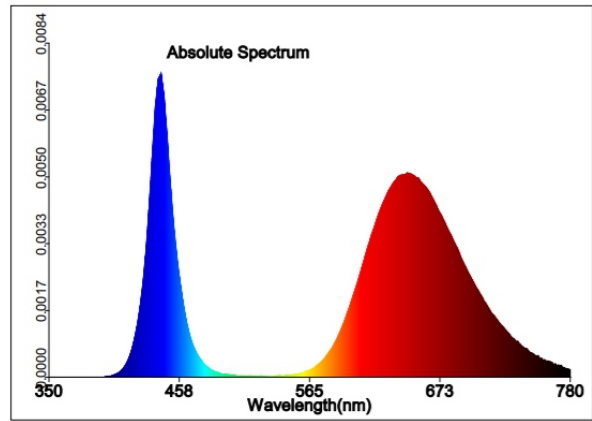
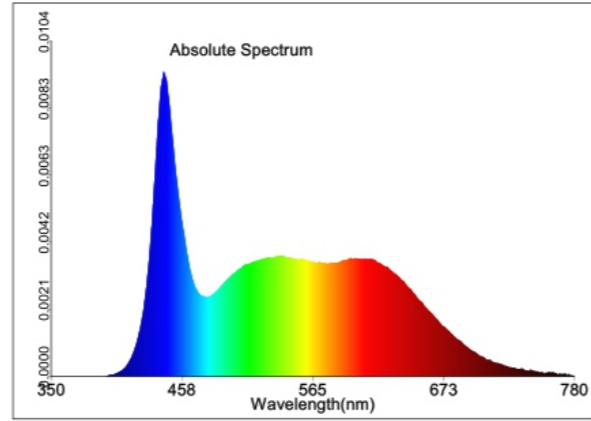
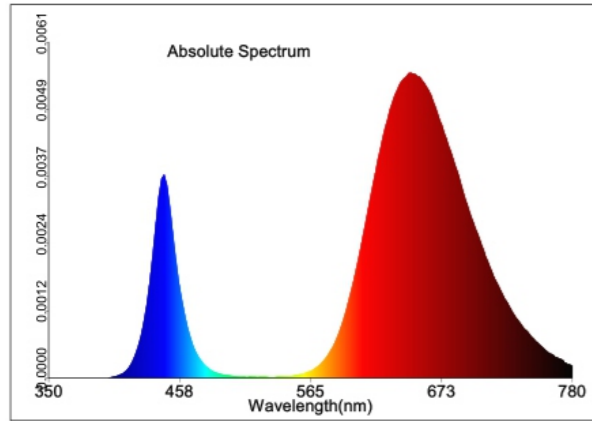


Package	Power (W)	Color	WL (nm)	Forward Voltage (V)	Forward Current (mA)	Luminous Flux (LM)	Viewing Angle (°)
LKL-3030BX	1	Blue	440-470	3/6	300/150	10-20	120
LKL-3030G2	1	Green	520-530	3/6	300/150	60-80	120
LKL-3030Y4	1	Yellow	590-595	2.0-2.6	300	20-30	120
LKL-3030R1	1	Red	620-630	2.0-2.6	300	30-40	120
LKL-3030DR	1	Deep Red	660-665	2.0-2.6	300	20-30	120
LKL-3030IR2	1	IR	730-740	2.0-2.6	300	/	120

K2 Horticulture LED



Package	Power (W)	Color	WL (nm)	Forward Voltage (V)	Forward Current (mA)	Luminous Flux (LM)	Viewing Angle (°)
LKL-K2BX	1-3	Blue	440-470	2.8-3.4	350-700	20-40	120
LKL-K2G2	1-3	Green	520-530	2.8-3.4	350-700	125-135	120
LKL-K2Y4	1-3	Yellow	590-595	2.0-2.6	350-700	50-70	120
LKL-K2R1	1-3	Red	620-630	2.0-2.6	350-700	60-80	120
LKL-K2DR	1-3	Deep Red	660-665	2.0-2.6	350-700	30-50	120



Landscape Lighting

03

- Full Color Red Green Blue Yellow RGB RGBW RGBWW...
- Various Packaging 2835, 5050, 5054, 5730, 3030, 3535, K2...
- High color uniformity, bi-color, 3 in 1, 4 in 1, 5 in 1 available
- Customized LEDs available

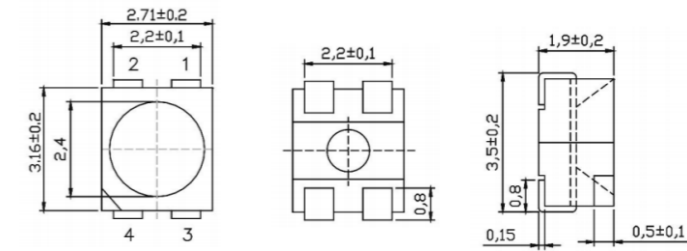


LEKOLED TECHNOLOGY CORPORATION

APPLICATION SCENARIOS

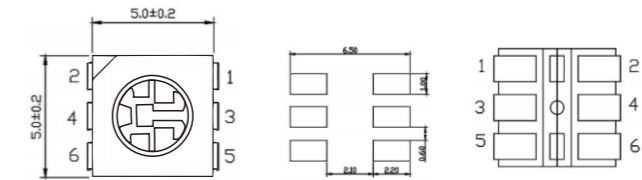


3528 Color LED



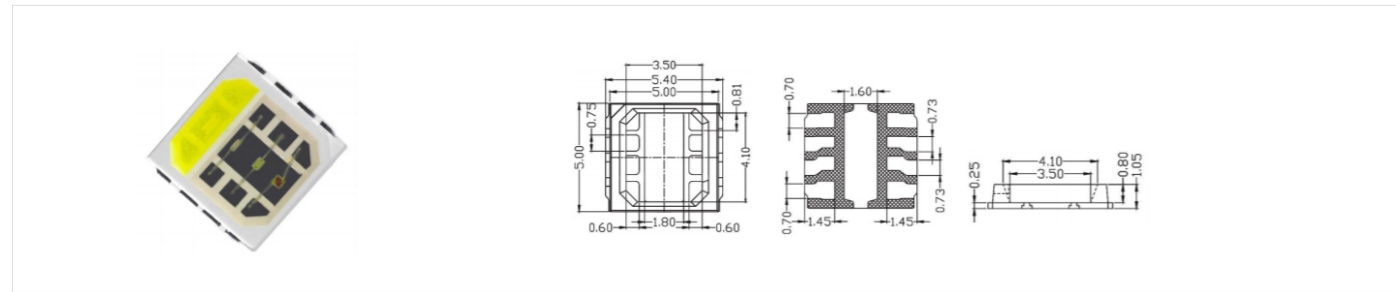
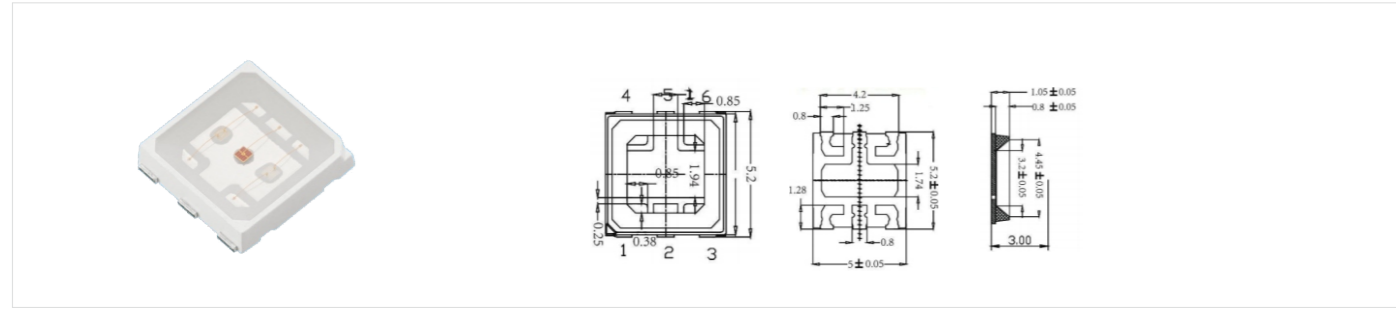
Package	Power (W)	Color	Emitting Color	WL (nm)	Forward Voltage (V)	Forward Current (mA)	Luminous Flux (mcd)	Viewing Angle (°)
LKL-3528R1	0.06	Red	Red	620-630	2.0-2.6	20	600-800	120
LKL-3528G2	0.06	Green	Green	520-530	2.8-3.4	20	1500-1800	120
LKL-3528B2	0.06	Blue	Blue	460-470	2.0-2.6	20	400-600	120
LKL-3528Y4	0.06	Yellow	Yellow	590-595	2.0-2.6	20	600-800	120
LKL-3528RGB	0.06	RGB	Red	620-630	2.0-2.6	20	600-800	120
			Green	520-530	2.8-3.4	20	1200-1500	
			Blue	460-470	2.8-3.4	20	400-600	

5050 Color LED



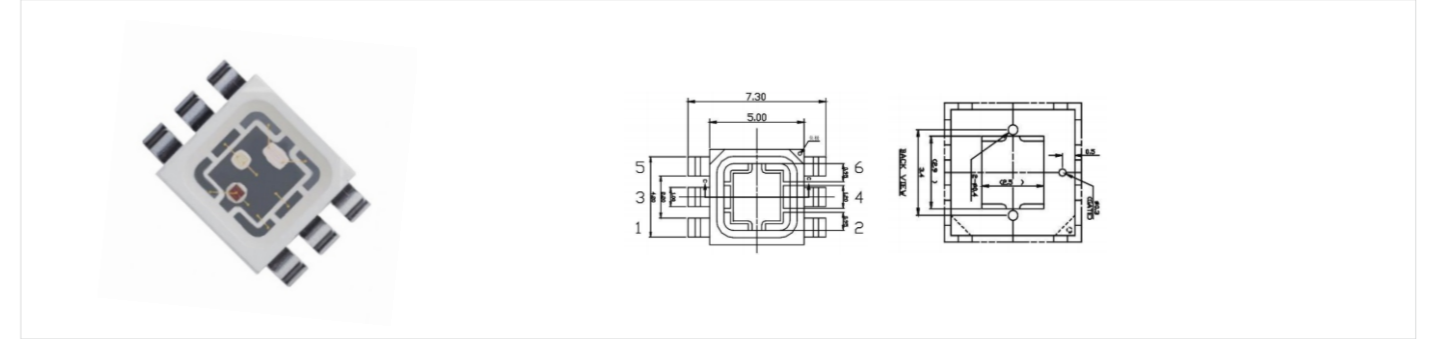
Package	Power (W)	Color	Emitting Color	WL (nm)	Forward Voltage (V)	Forward Current (mA)	Luminous Flux (mcd)	Viewing Angle (°)
LKL-5050R1	0.2	Red	Red	620-630	2.0-2.6	60	1800-2200	120
LKL-5050G2	0.2	Green	Green	520-530	2.8-3.4	60	5000-5500	120
LKL-5050B3	0.2	Blue	Blue	460-470	2.0-2.6	60	1400-1600	120
LKL-5050Y4	0.2	Yellow	Yellow	590-595	2.0-2.6	60	2000-2800	120
LKL-5050RGB	0.2	RGB	Red	620-630	2.0-2.6	20	600-800	120
			Green	520-530	2.8-3.4	20	1500-1800	
			Blue	460-470	2.8-3.4	20	400-600	

5054 RGB LED / 5054 RGBW LED



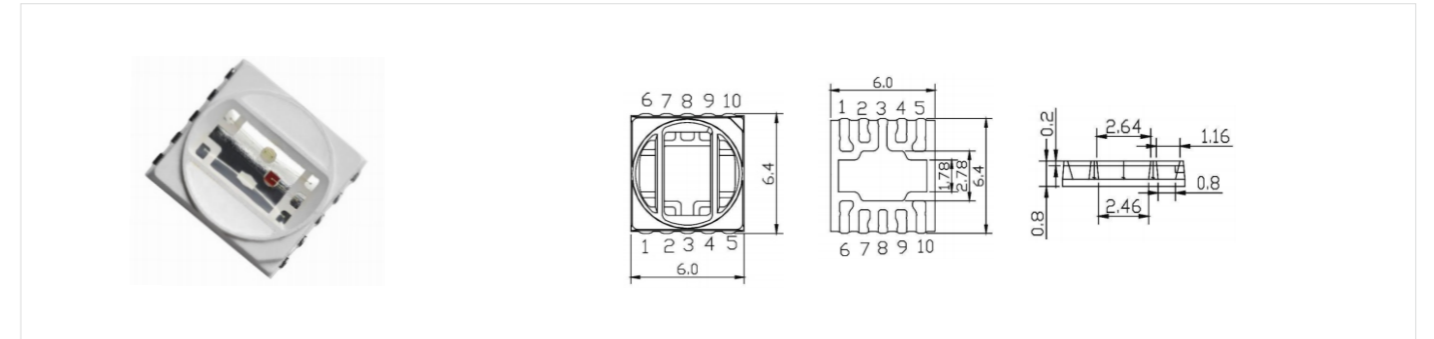
Package	Power (W)	Color	Emitting Color	WL/CCT (nm/K)	Forward Voltage (V)	Forward Current (mA)	Luminous Flux (LM)	Viewing Angle (°)
LKL-5054RGB-3V	1.5	RGB	Red	620-630	2.0-2.6	150	20-25	120
			Green	520-530	2.8-3.4	150	35-40	
			Blue	450-470	2.8-3.4	150	10-15	
LKL-5054RGB-6V	0.36	RGB	Red	620-630	6.0-6.4	20	5-8	120
			Green	520-530	6.0-6.4	20	10-15	
			Blue	450-470	6.0-6.4	20	2-3	
LKL-5054RGB-9V	0.54	RGB	Red	620-630	8-9	20	10-15	120
			Green	520-530	7-9	20	25-35	
			Blue	450-470	8-9	20	3-5	
LKL-5054RGB-18V	1	RGB	Red	620-630	17-19	20	25-30	120
			Green	520-530	15-18	20	60-65	
			Blue	450-470	11-13	20	11-13	
LKL-5054RGBW	2	RGBW	Red	620-630	2.0-2.6	150	15-30	120
			Green	520-530	2.8-3.4	150	30-50	
			Blue	450-470	2.8-3.4	150	10-20	
			White	2800-8000	2.8-3.4	150	50-80	

5074 RGB LED



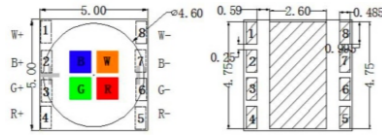
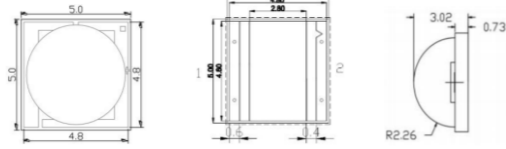
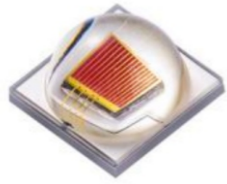
Package	Power (W)	Color	Emitting Color	WL/CCT (nm/K)	Forward Voltage (V)	Forward Current (mA)	Luminous Flux (LM)	Viewing Angle (°)
LKL-5074RGB	3	RGB	Red	620-630	1.8-2.6		35-45	120
			Green	520-530	2.8-3.4	30	60-75	
			Blue	450-470	2.8-3.4		25-35	

6064 RGBWW LED



Package	Power (W)	Color	Emitting Color	WL/CCT (nm/K)	Forward Voltage (V)	Forward Current (mA)	Luminous Flux (LM)	Viewing Angle (°)
LKL-6064RGBWW	2.5	RGBWW	Red	620-630	2.0-2.6	150	15-20	120
			Green	520-530	2.8-3.4	150	35-45	
			Blue	450-470	2.8-3.4	150	10-20	
			White	5000-8000	2.8-3.4	150	50-80	
			Warm White	2500-3500	2.8-3.4	150	45-75	

C5050 RGBY LED / C5050 RGBW LED



Package	Power (W)	Color	Emitting Color	WL/CCT (nm/K)	Forward Voltage (V)	Forward Current (mA)	Luminous Flux (LM)	Viewing Angle (°)
LKL-C5050R1	10	Red	Red	620-630	2.0-2.6	700-3000	200-300	120
LKL-C5050G2	10	Green	Green	520-530	3.0-3.6	700-3000	260-400	120
LKL-C5050B3	10	Blue	Blue	450-470	3.0-3.6	700-3000	70-100	120
LKL-C5050PY	10	Yellow	Yellow	1600-2800	3.0-3.6	700-3000	200-500	120
LKL-C5050RGB		RGBW	Red	620-630	2.0-2.6	700	100-120	120
			Green	520-530	3.0-3.6	700	200-220	
			Blue	450-470	3.0-3.6	700	40-60	
			White	3000/6000	3.0-3.6	700	200-220	

Automotive Lighting

04

- Wide Power Range 0.2W-30W available
- Various Packaging
3528,2835,3030,2525,3535,3025,3036... available
- Lower thermal resistance and fast heat dissipation
- High color uniformity, bi-color available
- For in-vehicle or out-car lighting
- Most of our automotive LED can pass the AEC-Q102 certificate



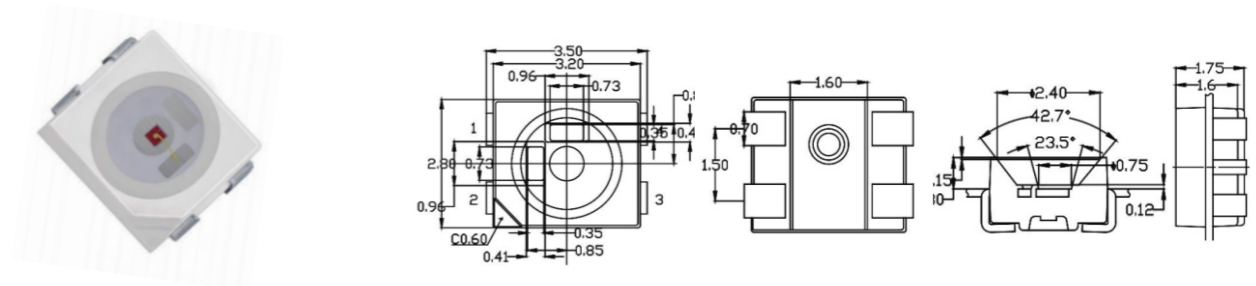
LEKOLED TECHNOLOGY CORPORATION

50
LEKOLED

APPLICATION SCENARIOS

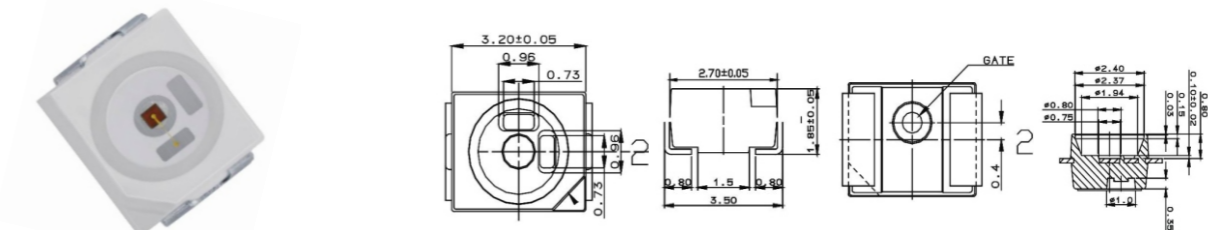


3528 SMD LED 4PIN



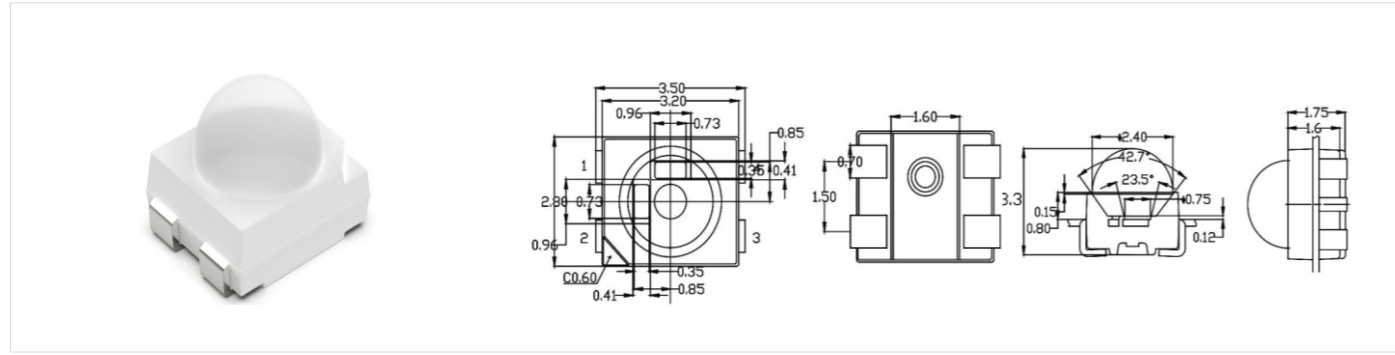
Package	Power (W)	Color	CCT/WL (K/nm)	VF (V)	IF (mA)	LM	Viewing Angle (°)
LKL-3528WX	0.2	White	3000-8000K	2.8-3.4	60	24-30	120
LKL-3528R1	0.2	Red	620-630	2.0-2.4	60	8-12	120
LKL-3528G2	0.2	Green	520-525	3.0-3.6	60	16-20	120
LKL-3528Y4	0.2	Yellow	590-595	2.0-2.4	60	8-12	120

3528 SMD LED 2PIN



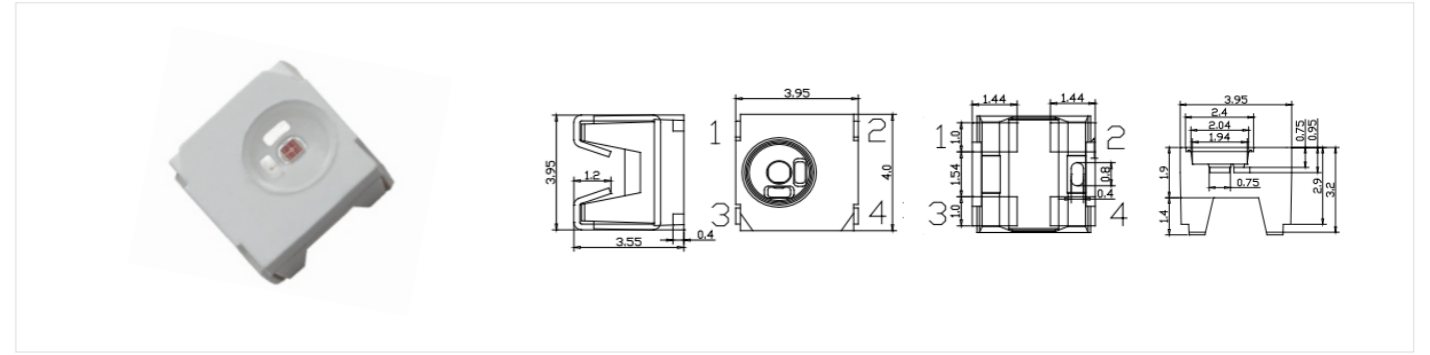
Package	Power (W)	Color	CCT/WL (K/nm)	VF (V)	IF (mA)	LM	Viewing Angle (°)
LKL-3528WX	0.2	White	3000-8000K	2.8-3.4	60	24-30	120
LKL-3528R1	0.2	Red	620-630	2.0-2.4	60	8-12	120
LKL-3528G2	0.2	Green	520-525	3.0-3.6	60	16-20	120
LKL-3528Y4	0.2	Yellow	590-595	2.0-2.4	60	8-12	120

3528 SMD LED LENS



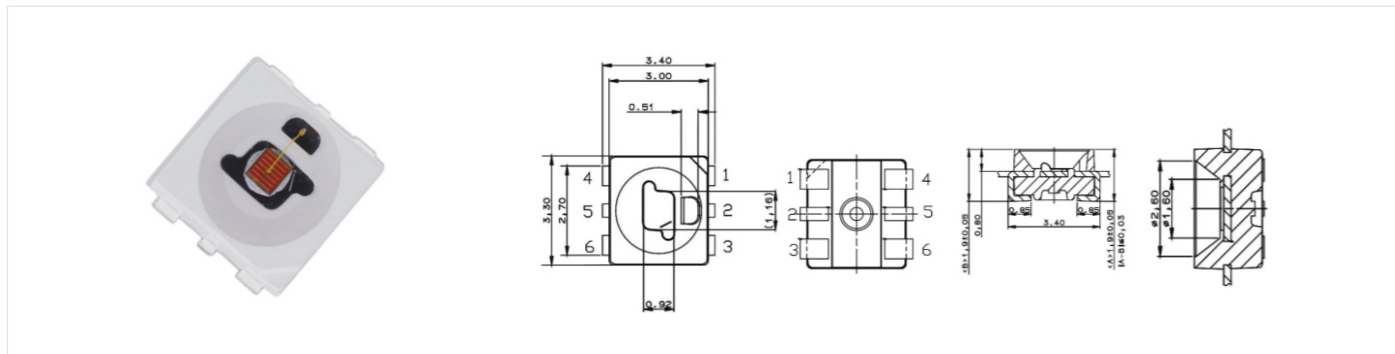
Package	Power (W)	Color	CCT/WL (K/nm)	VF (V)	IF (mA)	LM	Viewing Angle (°)
LKL-3528WX	0.2	White	3000-8000K	2.8-3.4	60	24-30	30
LKL-3528R1	0.2	Red	620-630	2.0-2.4	60	8-12	30
LKL-3528G2	0.2	Green	520-525	3.0-3.6	60	16-20	30
LKL-3528Y4	0.2	Yellow	590-595	2.0-2.4	60	8-12	30

LKL-4040 LED



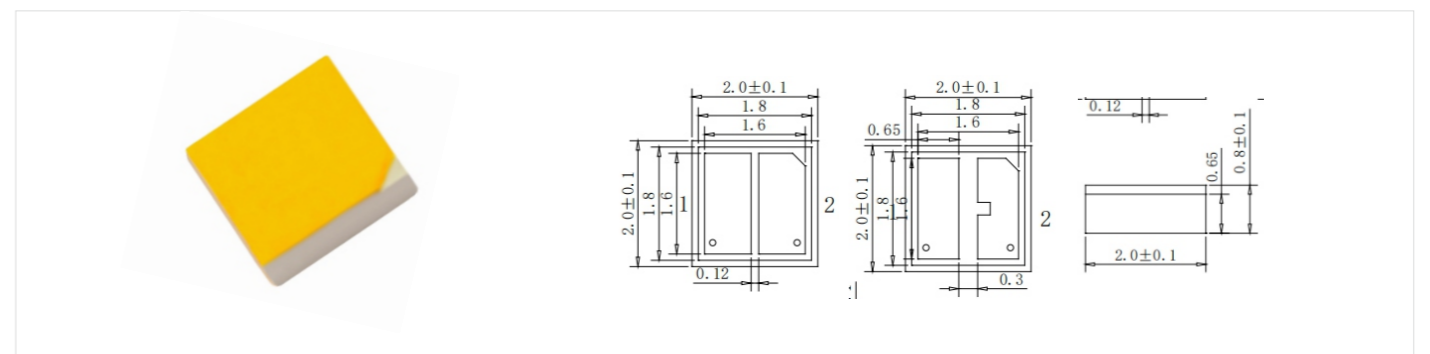
Package	Power (W)	Color	CCT/WL (K/nm)	VF (V)	IF (mA)	LM	Viewing Angle (°)
LKL-4040WX	0.5	White	5000-8000K	2.8-3.4	150	50-70	120
LKL-4040R	0.5	Red	620-630	2.0-2.4	150	15-20	120
LKL-4040Y	0.5	Yellow	585-595	2.0-2.4	150	15-20	120

P3433 SMD LED



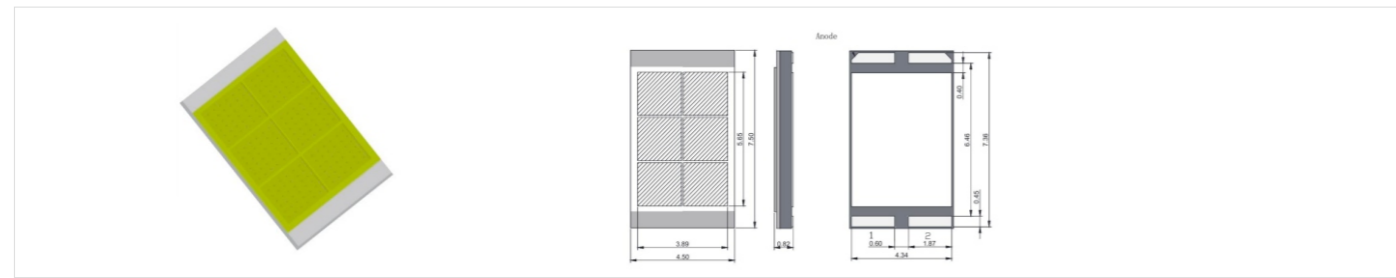
Package	Power (W)	Color	CCT/WL (K/nm)	VF (V)	IF (mA)	LM	Viewing Angle (°)
LKL-P3433WX	0.5	White	5000-8000K	3.0-3.4	150	60-75	120
LKL-P3433PY	0.5	Phosphor Yellow	1500-2000K	3.0-3.4	150	45-60	120
LKL-P3433R	0.5	Red	610-630	2.0-2.4	150	15-25	120
LKL-P3433Y	0.5	Yellow	585-595	2.0-2.4	150	15-20	120

Ceramic 2020 LED



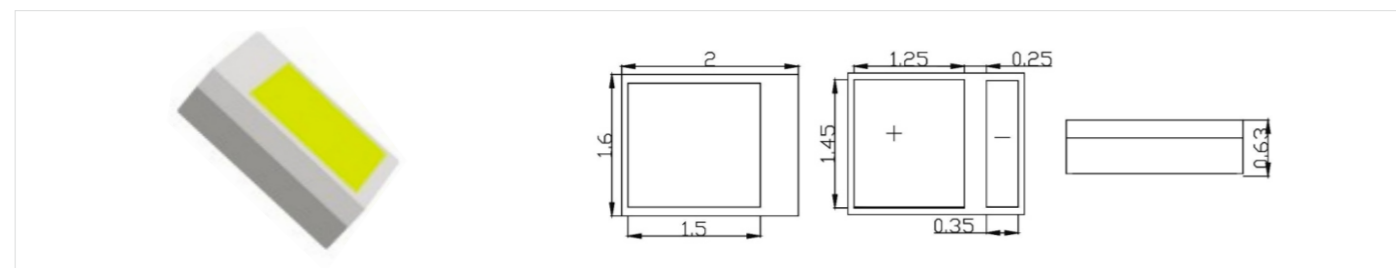
Package	Power (W)	Color	CCT/WL (K/nm)	VF (V)	IF (mA)	LM	Viewing Angle (°)
LKL-2020WX	1	White	5000-8000K	2.8-3.4	350	120-140	120
LKL-2020R	1	Red	620-630	2.0-2.4	350	40-50	120
LKL-2020G	1	Green	520-525	2.8-3.4	350	70-90	120
LKL-2020B	1	Blue	450-470	2.8-3.4	350	20-30	120

C4575 LED Ceramic



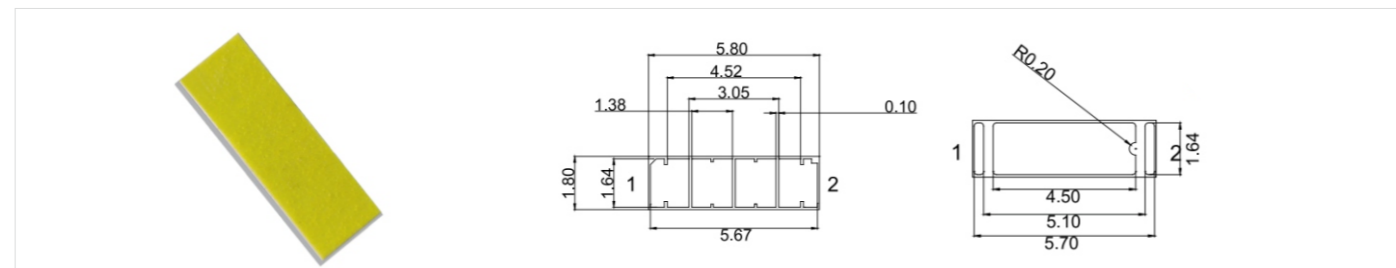
Package	Power (W)	CRI	CCT (K)	Forward Voltage (V)	Forward Current (mA)	Luminous Flux (LM)	Viewing Angle (°)
LKL-4575-30W	30	70	2800-8000K	9-10	2000	2000-2200	120

C2016 LED Ceramic



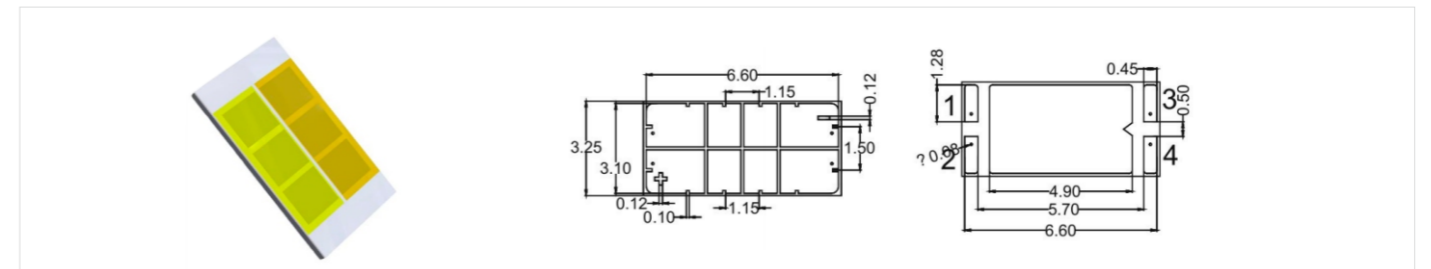
Package	Power (W)	CRI	CCT (K)	Forward Voltage (V)	Forward Current (mA)	Luminous Flux (LM)	Viewing Angle (°)
LKL-C2016-1W	1	70	2800-8000K	2.8-3.2	350	120-150	120
LKL-C2016-3W	3	70	2800-8000K	2.8-3.2	1000	280-320	120
LKL-C2016-5W	5	70	2800-8000K	3.0-3.4	1500	500-600	120

C1860 LED Ceramic



Package	Power (W)	CRI	CCT (K)	Forward Voltage (V)	Forward Current (mA)	Luminous Flux (LM)	Viewing Angle (°)
LKL-1860-15W	15	70	1500-2000K	9-10	1500	1000-1200	120
LKL-1860-15W	15	70	2800-8000K	9-10	1500	1200-1500	120

C3570 LED Ceramic



Package	Power (W)	CRI	CCT (K)	Forward Voltage (V)	Forward Current (mA)	Luminous Flux (LM)	Viewing Angle (°)
LKL-3570D	10	70	1500-4000K	9-10	1000	1000-1200	120
		70	5000-8000K			1100-1400	
LKL-3570-18W	18	70	4000-8000K	9-10	1800	2000-2300	120
LKL-3570-30W	30	70	4000-8000K	9-10	3000	3000-3300	120

Automotive Lighting LED



Package	Power (W)	Color	CCT/WL (K/nm)	VF (V)	IF (mA)	LM	Viewing Angle (°)
LKL-3025	6	White	5000-8000K	6	1000	590-680	
LKL-3036	9	White	5000-8000K	9	1000	850-1090	120
LKL-3047	12	White	5000-8000K	12	1000	1080-1385	

05

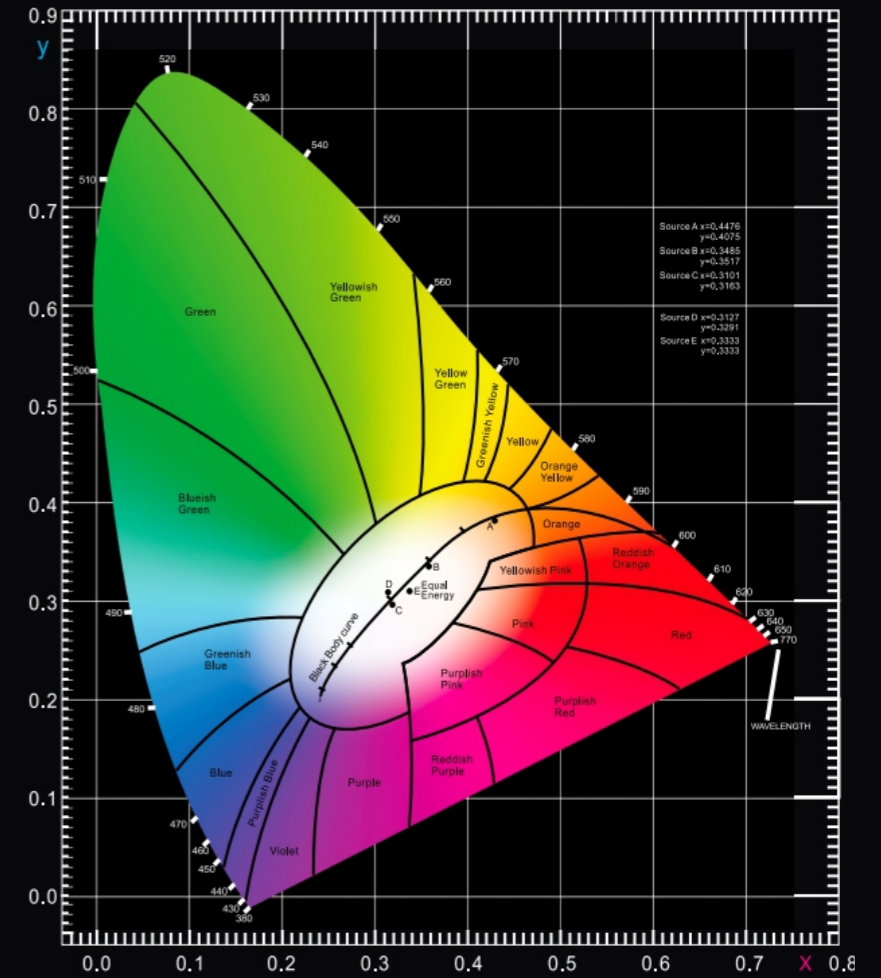
OEM & Customized Services

- Let us know your requirements, we make it from idea to real.
- We help our customers to design PCBs and offer soldering service
- We customize COBs or led modules as required
- We provide LEDs, LED Drivers and PCBs as an integrated solution
- We are a professional LED manufacturer to provide comprehensive & one-stop solutions to our valued customers



LEKOLED TECHNOLOGY CORPORATION

CIE1931₂
色度图
CHROMATICITY DIAGRAM



CIE1976
S CHROMATICITY DIAGRAM
匀色度图

